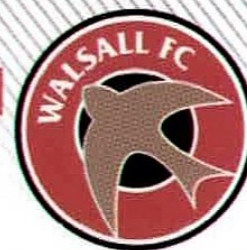


the saddler



vs. SWINDON TOWN
Tuesday, April 19th 2016
Sky Bet League One
Kick-off 7.45pm
Banks's Stadium



MATCH SPONSOR

MATCHBALL SPONSOR
THE SADDLERS CLUB
PROGRAMME SPONSOR

Your local Ford, Kia
and Mitsubishi Dealers

MATTHEW PENNINGTON IS SPONSORED BY SPV GROUP - 01922 749 511

25



THE OFFICIAL MATCHDAY PROGRAMME OF WALSALL FOOTBALL CLUB - £3.00

Buy your beer fresh from the Brewery

Choose from
20 different beers
and select 8 bottles
for just £10.00

Includes Banks's, Pedigree, Hobgoblin and EPA



BREWERY TOURS

Join us on a Brewery Tour and visit our extensive shop. You'll find out everything you ever wanted to know about Banks's cask ales when you step inside the famous Victorian Park Brewery in Wolverhampton. Finish your tour with three free half pints of our delicious cask ales.

Tours run – Mondays, Wednesdays and Fridays:
11.00am • 2.00pm • 6.30pm **Saturdays:** 12 noon

Price – £8.00 per adult • £5.00 per child

Maximum parties of 20 people, minimum of 6 per tour,
smaller parties can join other tours.

Tours are booked on request. Pre-book only.
Corporate / Group bookings are welcome.



www.bankssbeer.co.uk

visitorcentre@bankssbrewery.co.uk

01902 329653

It's in our nature





WALSALL FOOTBALL CLUB LTD.
Banks's Stadium, Bescot Crescent,
Walsall, West Midlands WS1 4SA

Tel: 01922-622 791

Fax: 01922-613 202

Email: info@walsallfc.co.uk

Ticket Office: 01922-651 414/416

Conference & Events: 01922-651 418

Commercial: 01922-651 403

Community: 01922-644 742

PRESIDENT: Barrie Blower MBE

BOARD OF DIRECTORS: Jeff Bonser (Chairman),
Richard Tisdale, Roy Whalley, Nigel Bond, Peter Gliman,
Stefan Gamble, Leigh Pomlett, Daniel Mole and Robert Bonser

CHIEF EXECUTIVE: Stefan Gamble

CLUB SECRETARY: Daniel Mole

HEAD COACH: Jon Whitney

GOALKEEPING COACH: Neil Cutler

PROFESSIONAL DEVELOPMENT COACH: John Ward

ACADEMY MANAGER: Neil Woods

HEAD OF ACADEMY COACHING: Graham Biggs

LEAD COACH FOR YOUTH DEVELOPMENT PHASE: Kyle Kirby

LEAD COACH FOR FOUNDATION PHASE: Adam Davy

HEAD OF EDUCATION: Sue Lane

ACADEMY ADMINISTRATOR:

Nick Adshead - youth@walsallfc.co.uk

FIRST-TEAM PHYSIOTHERAPIST: Marc Czuczman

CLUB DOCTOR: Dr Chris Minton

HONORARY CLUB SURGEON: Ashven Pimpalnerkar

STRENGTH & CONDITIONING: Dean Harris

PERFORMANCE ANALYST: Calum Hayes

KIT MAN: Tom Bradley

ACCOUNTS: Michelle Dralsey, Liz Withey

WAGES ADMINISTRATOR: Debbie Saunders

STADIUM MANAGER: Andy Thomas

HEAD GROUNDSMAN / TRAINING GROUND MANAGER:

Paul Mason

SAFETY OFFICER: Jim O'Grady

CONFERENCE & EVENTS OPERATIONS MANAGER:

Vicki Chambers

CONFERENCE & EVENTS: Sharna Patel

CONFERENCE & EVENTS BUSINESS DEVELOPMENT MANAGER:

Dianne Elsworth

CONFERENCE & EVENTS SALES EXECUTIVE: Helen Dean

COMMERCIAL MANAGER: Wayne Thomas

HEAD CHEF: Richard Varley

ASSISTANT CHEF: Mandy Llewellyn

BARS MANAGER: Murat Gulen

TICKET OFFICE MANAGER: Gemma Park

COMMUNITY MANAGER:

Adam Davy - community@walsallfc.co.uk

SADDLERS LEARNING CENTRE MANAGER:

Sue Lane - 01922-629 238

CLUB CHAPLAIN: Rev. Peter Hart

RECEPTIONIST: Diane Williams

RETAIL MANAGER: Emma Sutton

MULTI-MEDIA: Dale Moon

CLUB JOURNALIST: Daniel Briggs

PRESS OFFICER / SUPPORTER LIAISON OFFICER: Daniel Mole

MARKETING / SCOREBOARD OPERATIONS: Daniel Clarke

OFFICIAL PHOTOGRAPHER: David Linney

ADDITIONAL PHOTOGRAPHY: Kevin Grice

MATCHDAY HOST / CLUB AMBASSADOR: Mick Kearns

The views expressed within this publication are not necessarily those of Walsall FC or the publisher, unless otherwise stated. No editorial or photographs can be reproduced in full or part without written authority from Walsall FC.

PRINT: Excel Print Ltd, Aldridge - 01922-715 060
excelprinting@btconnect.com

IN THIS ISSUE

05

Whitters



07

Chief Executive



11

Skipper



13

Player Interview



38-42

The Opposition



64-65

Stats So Far



Editor: Andrew Poole

Design: Simon Cooper - Excel Print Ltd

Cover Design: Berian Lowe

Photography: David Linney, Kevin Grice and Rob Ellis

Never miss a match again.

Broken boiler? Burst pipe?
We'll take care of it.



Visit us at homeserve.com
Proud to support Walsall FC



HomeServe
We'll take care of it

WHIT AND WISDOM



A VERY warm welcome back to the Banks's Stadium for this evening's League One match against Swindon Town.

We enter tonight's game on the back of a thoroughly deserved 1-0 victory over Southend United at the weekend - our second win in five days.

All the talk after beating Gillingham so impressively last Tuesday was about backing up that performance with another one on home soil.

I thought we were excellent against Southend; we matched them physically, created a lot of chances and showed real belief to keep going until the end.

To play with that energy as well, for the second time in five days, was a real credit to the players - and also the staff and the medical department.

We didn't get back from Gillingham until about three in the morning, which can upset your body clock, but we showed no signs of fatigue and were the better team throughout.

We would have scored more but for their 'keeper, Dan Bentley, who made some incredible saves, but our boys kept pressing for that goal and eventually we got our just rewards.

The players deserve all the credit; they really are a pleasure to work with and I look forward to it every day.

I must thank you, the fans, as well for your magnificent support in that game. You created a fantastic atmosphere and really helped the players get over the line.

We need you more than ever in our final five games; you were the 12th man against Southend and we need you to be the 12th man again tonight. Your support really makes one hell of a difference.

Onto tonight and I would like to extend a warm welcome to Luke Williams and all the players, staff and supporters from Swindon.

I've watched Swindon a few times and, although they might not be in the best of form, I can assure you that it will be a really tough game. They've got some very good players and with Nicky Ajose up front, they have one of the best strikers in the League.

They're a team who play football the right way and they probably need one more win to preserve their League One status.

We've got to make sure that win doesn't come against us. We certainly won't underestimate them and we'll have to be at our best to get a positive result.

Finally I would like to congratulate Romaine Sawyers and Rico Henry on being nominated for the League One Player of the Year and Football League Young Player of the Year respectively.

They fully deserved their nominations and although they didn't win, they're both winners in mine and the club's eyes.

Please get behind us again tonight - YOU can be the difference.

Onwards and upwards...

JON WHITNEY

“ We need you more than ever in our final five games; you were the 12th man against Southend and we need you to be the 12th man again tonight. Your support really makes one hell of a difference.. ”



Jon Whitney is sponsored by Assured Plumbing, Gas & Electrical Ltd. - 01922-454 687
This page is sponsored by PJ Arnold Ltd. - Decorators & Painting Contractors - 0121-568 626



WALSALL FC
THE EVENT EXPERTS



SING BABY SING

TRIBUTE TO **THE STYLISTICS** CABARET EVENING

AT WALSALL FOOTBALL CLUB, BANKS'S STADIUM

SATURDAY 23RD APRIL

DOORS OPEN 7:30PM - TICKETS £32.50

INCLUDES A 3 COURSE MEAL

**TICKET OFFICE 01922 651 416 | WEBSITE WFCTHEVENUE.CO.UK
VISIT BANKS'S STADIUM, WALSALL FOOTBALL CLUB**



“All in all the #IBelieve campaign has been a huge success and I would like to take this opportunity to thank all those who purchased their season ticket, without you this club simply could not operate...”

FROM THE CHIEF EXECUTIVE

The thoughts of Stefan Gamble...

GOOD evening and welcome back to the Banks's Stadium for our home game against Swindon Town. We welcome our visitors and wish them a safe journey home afterwards.



We left it late on Saturday as Jordy's header secured a much-deserved 1-0 win against an organised Southend United side that had proven hard to break down. That victory now puts us within touching distance of the automatic promotion places and with five games still to go I'm sure there will be a few more twists and turns before the final ball is kicked.

The support on Saturday was absolutely tremendous and was no doubt a big factor in keeping the lads going

right until the final whistle. Jon, I know, is very passionate about the supporters and a big believer in them being the '12th man' and playing their part.

Following on from that, with the Early Bird season ticket promotion for the 2016-17 season coming to a close on Saturday 2nd April, I'm pleased to be able to tell you that the team will also enjoy great support next campaign, whichever division we find ourselves in, as sales hit a ten-year high.

Total sales were 22.5% higher than the current season with sales in every stand up compared to last year: HomeServe Stand (1.1%), Community Stand (18.9%), Lower Tile Choice Stand (28.1%) and Middle & Upper Tile Choice Stand (33.6%).

Sales in each different price class are also greater this campaign compared to last; Adult ticket sales (23.8%), seniors (19.1%), Saddlers Crew (17.9%) and Swifty's Squad (22.3%).

All in all the #IBelieve campaign has been a huge success and I would like to take this opportunity to thank all those who purchased their season ticket, without you this club simply could not operate.

Thank you once again for your support. Have a great evening and enjoy the match...

WALSALL vs
FLEETWOOD
MONDAY 2ND MAY
KICK OFF 12:15^{PM}

TICKET OFFER
1 ADULT & UP
TO 2 JUNIORS
FOR £10

OFFER VALID IN THE UPPER AND MIDDLE
SECTIONS OF THE STADIUM ONLY

TICKET OFFICE 01922 651 416
VISIT ETICKETING.CO.UK/WALSALLFC

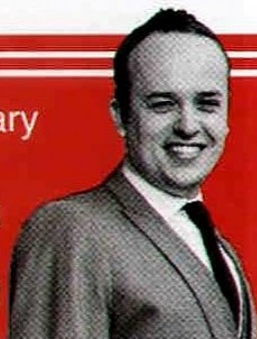


SADDLERS NEWS

Hello and welcome back to the Banks's Stadium for this evening's Sky Bet League One clash with Swindon Town...

with Club Secretary

DANIEL
MOLE



WELL DONE ROMAINE & RICO

It was great to see Romaine Sawyers and Rico Henry both nominated at Sunday night's Football League Awards.

Romaine was nominated in the category of League One Player of the Year and Rico as Young Player of the Season (all divisions).

Even though both players ultimately failed to win their award, the club are extremely proud of them and their achievements both on and off the field.



LEGENDS IN ACTION NEXT MONTH

A host of club legends, and Commercial Manager, Wayne Thomas, are set to take on Wednesbury Athletic in the inaugural Margot Martini Cup next month.

Chasetown's Scholars Ground will host the game on Saturday 7th May (kick-off 3.00pm) in aid of two year-old Margot Martini who sadly passed away after suffering from extremely rare dual lineage Leukaemia complications.

Saddlers' Legend, Chris Marsh, will manage The Saddlers' team, ably assisted by former Walsall defender Stuart Ryder.

Tickets are £4 for adults and £2 for children and free for under-6s.

Proceeds raised on the day will go towards the Team Margot foundation in what will be a day to celebrate Margot's short but inspirational life.



FINAL TWO HOMES GAMES REARRANGED

Just a reminder that our Sky Bet League One fixtures at home to Shrewsbury Town, originally scheduled for Easter Monday, and Fleetwood Town, originally scheduled for Saturday, 30th April, will now take place on Tuesday, 26th April (kick-off 7.45pm) and Monday, 2nd May (kick-off 12.15pm) respectively.

The Fleetwood fixture will be shown live on Sky Sports and there is a special ticket offer for this fixture, which is advertised on the previous page.

WELCOME NEW SCHOLARS

I am delighted to welcome our new intake of Scholars to the Banks's Stadium this evening.

Joseph Cairns, Mitchel Candlin, Cody Fisher, Ethan Freemantle, Brandon Ganley, Samuel Holden, Ben Kendrick, Stefan Mason, Debert Massamba and Daniel O'Sullivan have all signed on to our two-year Apprenticeship in Sporting Excellence.

They will enjoy a meal with their families before tonight's game and will be presented on to the pitch at half-time with Academy Manager, Neil Woods.

MIDLAND YOUTH CUP FINAL

I am pleased to confirm that our youth team have reached the Final of the Midland Youth Cup.

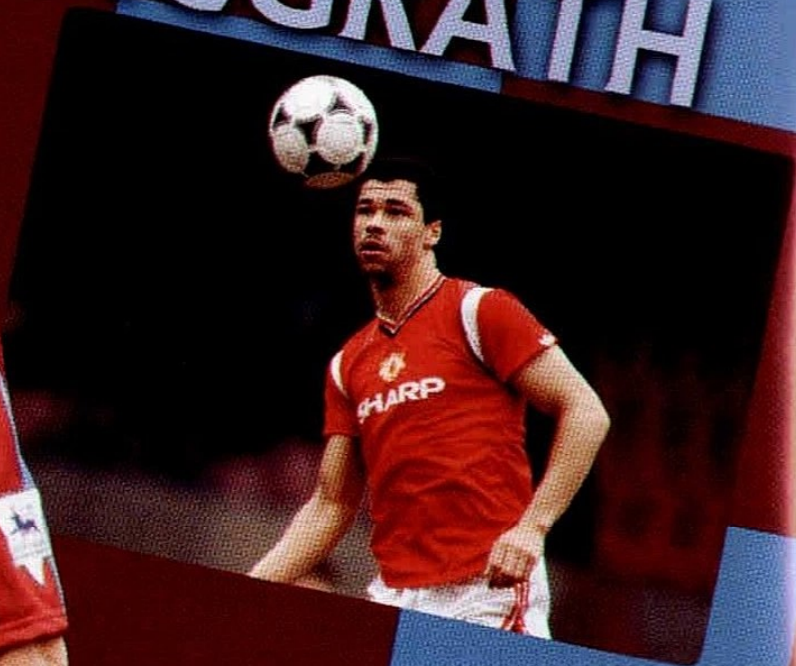


They travel to Basford United, Nottinghamshire, in the Final.

This game will be played at Basford's Greenwich Avenue on Thursday, 28th April. Kick-off is 7.00pm and admission, which is still to be confirmed, will be i£3 (adults) and £1 (concessions).

A SPORTING DINNER WITH FORMER
ASTON VILLA AND MANCHESTER UNITED CENTRE-BACK....

PAUL MCGRATH



THURSDAY
12TH MAY
TICKETS £37.50 PER PERSON
TO INCLUDE A 3
COURSE MEAL

TICKET OFFICE | 01922 651 416
VISIT | ETICKETING.CO.UK/WALSALLFC



CAPTAIN CHAMBERS

The skipper has his say...

THERE was another unbelievable finish here at Banks's Stadium on Saturday after a late goal from Jordy gave us a deserved three points against Southend United.

It had looked like it was going to be one of those days; shot-after-shot whistled past the woodwork, was blocked, cleared off the line or, more often than not, was saved by their goalkeeper, who produced an outstanding performance.

I thought we dominated the game from start to finish with a great purpose to our play throughout. The fans really got behind us and we continued to believe in what we were doing until the very end when our persistence paid off with a header from Jordy that bounced over the line from my viewpoint!

Hard luck to Rom and Rico after they missed out at The Football League Awards in Sunday evening. I'm sure they'll both be a little disappointed not to have won, even though it's a great achievement to be have been nominated.

They're both prime examples of the club's philosophy to bring through and develop young talent; we should all be very proud of the work that's being done by so many people at the club to ensure we keep building for the future.

We'd all like to wish Reece a speedy recovery from an injury he recently picked up in training. The full extent is not known at the time of writing, so I'm hoping it's not as serious as first thought. He's been an important part of the squad this season, putting in some quality performances which have showcased the undoubted ability he has.

We welcome Swindon Town here tonight. We've had some entertaining games against each other over the past couple of seasons and we know they're more than capable of dictating games and scoring goals, so we need to make sure we're at our best tonight and with the help of the fans keep believing until the end.

It was great to see so many former players from down the years with us on Saturday as part of Former Players Day. Events like this really reinforce the Walsall FC Family theme, so well done to all involved.

Your backing is going to be so important to us in these final games that lie ahead, so let's hear you in good voice from the off tonight.



Adam Chambers

STAND OUT FROM THE CROWD
BE CREATIVE...
BE ENTREPRENEURIAL...



**WALSALL
STUDIO
SCHOOL**
TRANSFORMING
YOUR FUTURE...

Y10 & 6th FORM PLACES FOR SEPTEMBER

www.walsallstudioschool.co.uk 01922 621 951

no.
15

LALKOVIC UNLEASHED

Milan comes out of the cage...

THE LAST two games have seen Milan Lalkovic unleashed on the opposition and the talented Slovakian has helped The Saddlers secure a hard-earned six points to maintain our automatic promotion push.

The 23 year-old returned to starting duty for the first time since the beginning of March at Gillingham seven days ago and responded by finding the net in our 2-1 win before keeping his starting place at the weekend and playing his part in our victory over Southend.

"It's frustrating being on the bench," he admitted. "I was angry that I didn't start at Oldham; any footballer who is not playing feels this way, but I spoke to people here and it helped me.

"I have been training well and it was a case of waiting for my chance to come around again, which it did at Gillingham.

"I was very happy and it was nice to score in such a big game. In my goal celebration I was dusting myself off because it has been as though I've been locked up in a cage for the last five weeks.

"Now that I am out I want to be involved in the big games that are coming up between now and the end of the season.

"We all have a job to do and we all have to knuckle down and work hard so that we can get to where we want to be.

"We know that we have to be prepared to fight until the bitter end. That was the case on Saturday, but we kept going and got our reward with Jordy's late winner.

"Our aim is still very much automatic promotion. We've put ourselves into a good position and we have to just keep doing what we're doing and maintain high standards.

"It's another important game tonight, but we're ready for it."

“We know that we have to be prepared to fight until the bitter end. That was the case on Saturday, but we kept going and got our reward with Jordy's late winner.”

JTF



MEGA DISCOUNT WAREHOUSE

ON A MISSION?

LAWN-KING

**Petrol
mower**

**99
CC**

WOW
£99.99
EX VAT
inc VAT £119.99



GET TO

Bescot Retail Park,
next to Walsall FC, WS1 4SB
Everyone welcome

Free membership. Subject to availability, all prices correct at time of going to print.

10% OFF EVERYTHING

On your next shop - simply
present this ad at the tills

In-store only. Valid from 16th April to 23rd April
2016. This voucher entitles the card holder to 10%
off their next shop. One transaction per member.
Cannot be exchanged for cash or vouchers.
Present voucher at checkout to qualify. Statutory
rights are not affected.



5038037581761_371750

92 IN 92

Gruelling challenge for brothers this week...



BROTHERS Chris and Stuart Daynes are this week embarking upon a gruelling challenge to visit all 92 Premier League and Football League grounds in just 92 hours.

The duo are embarking upon the mammoth 2,500-mile challenge to raise vital funds for the Crohn's & Colitis UK Charity and also a project to develop the Club House at their local club, Felixstowe & Walton United FC.

They started out at Felixstowe's Goldstar Ground, where Chris is facilities manager and Stuart is the supporters' club chairman, yesterday evening and are due to arrive here at Banks's Stadium at around 8.40pm tomorrow night.

Their mission is due to end at Ipswich Town's Portman Road ground on Friday afternoon.

The Crohn's & Colitis UK Charity is one that is very close to their heart. Chris has suffered from the debilitating illness for the past 25 years and undergoes intensive treatment at The Royal London Hospital on a regular basis.

Their fund-raising has already been boosted by a donation from West Bromwich Albion midfielder, Darren Fletcher, who was diagnosed with the illness while playing for Manchester United.

Donations and items of memorabilia have already been received so that the brothers will start the challenge with their petrol paid for and more than £2,000 already in the fund.

We wish them well in their quest and look forward to welcoming them here tomorrow evening.

KATHLEEN VURLAN



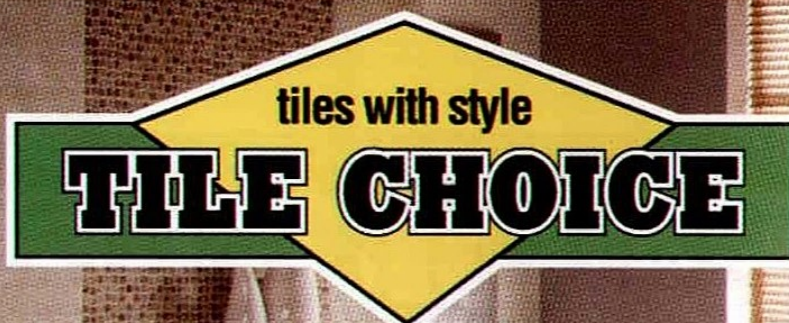
WE ARE sad to report the passing of lifelong Saddlers' supporter, Kathleen Vurlan, at the age of 90.

Ill health prevented her attending games in recent years but she continued to avidly follow the fortunes of the club right up until her passing at the start of this month.

Pictured here we see her sitting in her beloved garden, which includes slabs from the Fellows Park terracing, which were purchased from the club back in 1990.

The thoughts of everyone here at Walsall FC go out to her family and friends at this sad time. RIP.

Staying ahead of the game in tiles



PROUD TO BE SPONSORS OF WALSALL FC

UPTO
50% off
all tiles

If you are looking for an up to the minute design for your kitchen, bathroom or en-suite, traditional style or a period look for your hallway or conservatory. Tile Choice can meet your every requirement at exceptional prices.

WALSALL
Birchills House
Birchills Ind. Est.
Green Lane
WS2 8LE
01922 746666

CANNOCK
Units 25 & 26
Longford Ind. Est.
Longford Road
WS11 0DG
01543 469400

PERRY BARR
Unit D
75-97 Walsall Road
Perry Barr
B42 1TX
0121 344 3959

WEST BROMWICH
Units 3/4 Queens
Court Trad. Est.
Greets Green Rd
B70 9EG
0121 520 0600

BIRMINGHAM
267 Bromford Lane
Ward End
Heartlands
B8 2SG
0121 328 8938

BILSTON
7 Millfields Road
Bilston
Wolverhampton
WV14 0QJ
01902 405526

& LICHFIELD • SHREWSBURY • BROMSGROVE • KIDDERMINSTER • DERBY • BURTON • NORTHAMPTON • KETTERING • CORBY

OPEN 7 DAYS A WEEK

www.tilechoice.co.uk

TWEETS OF THE WEEK

Tweet your messages and pictures to @WFCOfficial and who knows, you could find yourself here on our Tweets of the Week page...



Brian Addehead
@Brian_Addehead

Congratulations to @RomaineSawyers on being shortlisted. Fingers crossed for a @WFCOfficial double with @looherry14 [twitter.com/wfcofficial/st...](https://twitter.com/wfcofficial/status/1204001619148)



Richard O'Donnell
@RichODonnell23

@SaddlersSite @VitaWalsall have faith...the right people are in charge and plenty of points to play for!
12/04/2018 19:48



Richard O'Donnell
@RichODonnell23

@WFCOfficial congrats @RomaineSawyers



Rico Henry
@RicoHenry14

Massive result! Lads dug deep as usual! Safe drive back to the travelling fans!



Super Saddlers
@walsall_fan

What a great night for @WFCOfficial well worth the wait on the M25! @RomaineSawyers was superb pulling all the strings. Still buzzing



Michael Hughes
@WalsallFC



Neil Etheridge
@NeilCEtheridge

Thank you to all the @WFCOfficial supporters that made the long trip down south to watch us! Fantastic win! #NE1



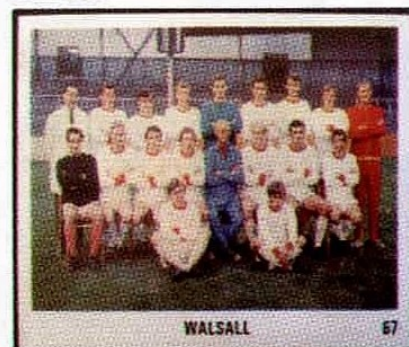
Jordan Cook
@brook210

What a win and performance from the boys 🙌🙌🙌 don't think I've headed the ball as much in my life at the end there 🙌 #UTS 🙌



Football Memorabilia
@FootballMemorabilia

#WalsallFC Sun Football Swap Card 1970 @WFCOfficial @WalsallWebFans @VitaWalsall @DSadlad @saddlerboy #Walsall #UTS



BCTV Sport
@BCTV_Sport

Today we're off to Gillingham with @WFCOfficial for a behind the scenes episode of Saddlers TV. @BigCentreTV #WFC



FootballLeaguePaper @TheLeaguePaper
POTY nominee: @WFCOfficial midfielder @RomaineSawyers.

Goal of the Season contender for strike against Blackpool.



Shaun Morris
@saddler1990





NUMBERS GAME 17

Club Journalist, Daniel Briggs, profiles Walsall players past and present who have worn a certain shirt number. This week, we look at No.17s...

CURRENT PLAYER:

Reece Flanagan
2013-Present

Young midfielder Reece Flanagan is a product of the club's youth system.

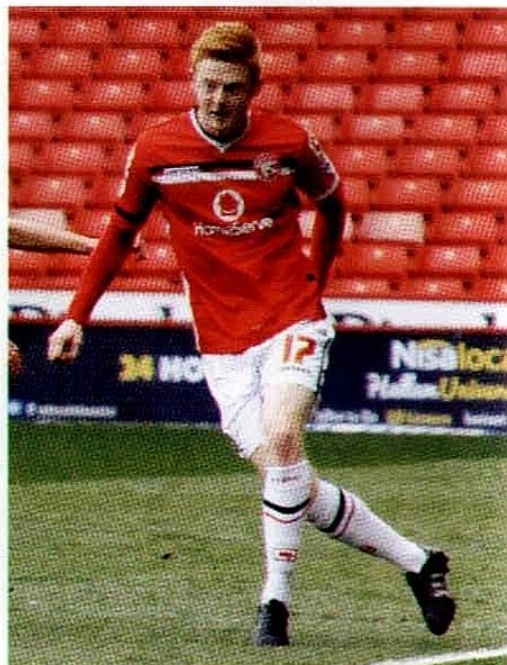
Born in Birmingham, the 21 year-old signed his first professional contract in January 2013 after impressing at youth level.

He enjoyed a fruitful loan spell with non-League side Leamington during the 2013/14 campaign, scoring twice in eight outings.

In August 2014, Flanagan made his first-team debut for Walsall as a second-half substitute in a goalless draw at Leyton Orient.

His first senior start came against Colchester the following month - a game which also finished goalless - and he went on to play 18 games for the Saddlers last term.

Flanagan has played 17 times this season - taking his overall appearance tally to 35, of which 19 have been starts. He is currently laid low with an injury that he picked up recently in training.



PAST PLAYERS:

George Bowerman
2010-13

Forward George Bowerman spent three years as a professional at the Banks's Stadium between 2010 and 2013.

Born in Sedgley, the 24 year-old came through The Saddlers' youth ranks and was handed his first-team debut in a 3-0 League Cup defeat against Middlesbrough in August 2011.

Bowerman scored his maiden career goal in his third appearance - a 4-2 home defeat against Bury - and went on to notch 11 goals in 59 outings for the Saddlers.

He joined Woking in August 2013 but played only twice before joining Accrington, for whom he netted three times in 19 appearances.

Bowerman was snapped up by Altrincham in August 2015 and enjoyed a short temporary spell at AFC Telford earlier this year.

He is currently on loan at Stourbridge until the end of the season.



Julian Bennett 2004-06

Centre-back Julian Bennett scored three goals in 51 League appearances for The Saddlers.

The reliable defender was a youth player at his hometown club Nottingham Forest's Centre of Excellence but was rejected aged 15 and joined Walsall.

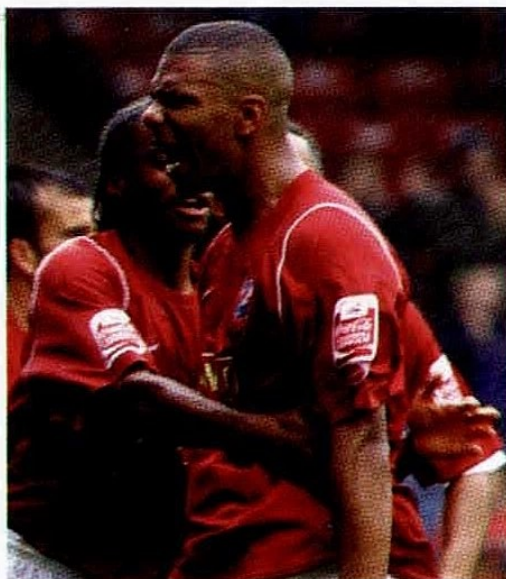
He made his first-team bow in a 1-0 defeat at Wigan in February 2004 and soon became a regular in the side.

In January 2006, he signed for Nottingham Forest, where he made over 100 appearances in five years and won promotion from League One in 2007/08.

Bennett later fell out of favour and was loaned to Crystal Palace before signing for Sheffield Wednesday in July 2011.

He helped the Owls win League One promotion in 2011/12, and also played for Shrewsbury and Southend before being forced to retire due to injury in June 2015.

He now coaches youngsters and does media work in Nottingham.



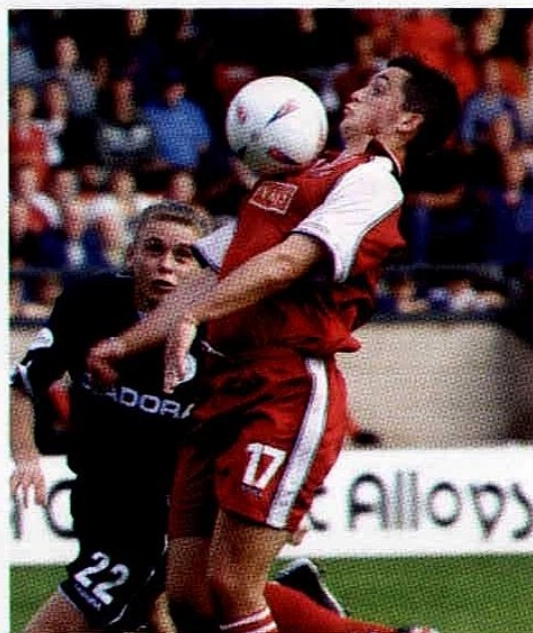
Gary Birch

1998-2004

Striker Gary Birch netted eight times in 77 League and Cup games for Walsall after progressing through the club's youth ranks.

The Birmingham-born forward turned professional in October 1998 and marked his senior Saddlers' debut with a goal in a 2-1 LDV Vans Trophy win over Wigan in January 2001.

Birch was loaned to Exeter, Nuneaton and Barnsley before joining Kidderminster permanently in December 2004.



A year later he transferred to Lincoln, where he scored ten times in 43 competitive games over two seasons, prior to leaving for Telford in 2007.

He represented Chasetown between 2008 and 2012, plundering 40 goals in 127 outings, and finished his playing career with Solihull Moors in 2014.

The 34 year-old is now a groundsman who also manages local non-League outfit, Lichfield City FC.

AROUND THE LEAGUE

CURRENT NUMBER 17'S AT FELLOW LEAGUE ONE CLUBS:

Barnsley
Brad Abbott
Blackpool
Daniel Philliskirk
Bradford
Kyel Reid
Burton
Marcus Harness
Bury
N/A
Chesterfield
Connor Dimaio
Colchester
Sammie Szmodics
Coventry
Aaron Phillips
Crewe
N/A
Doncaster
Gary MacKenzie (pictured)
Fleetwood
N/A
Gillingham
Rory Donnelly
Millwall
Byron Webster
Oldham
Tareiq Holmes-Dennis
Peterborough
Simon Gillett
Port Vale
Michael Brown
Rochdale
Scott Tanser
Scunthorpe
Conor Townsend
Sheff Utd
Martyn Woolford
Shrewsbury
Aby Ogogo
Southend
Stephen McLaughlin
Swindon
N/A
Wigan
Michael Jacobs



TEAM PLAYERS



We've worked long and hard putting our team together.
They've been tactically formed to help create long term success
for you and your business.

Contact us for an informal discussion on how we can help.
Call free on: **0800 298 3899** | Email: **enquiries@dains.com**
or text '**Dains**' to **80800**

Offices throughout the Midlands | Advisers & Auditors to Walsall FC



Autograph

MATTHEW PENNINGTON



WALSALL

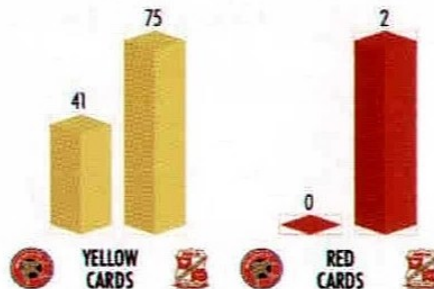
V

SWINDON TOWN



MATCH FACTS

Walsall have conceded in 12 of their last 13 league meetings with the Robins.



MATCH FACTS

Swindon are unbeaten in their last five matches away to Walsall (W3 D2).



GOALS



AV.GOALS PER GAME



SHOTS (EX. BLOCKED)



% SHOTS ON TARGET



CLEAN SHEETS



% GOALS TO SHOTS



CORNER KICKS



GOALS CONCEDED

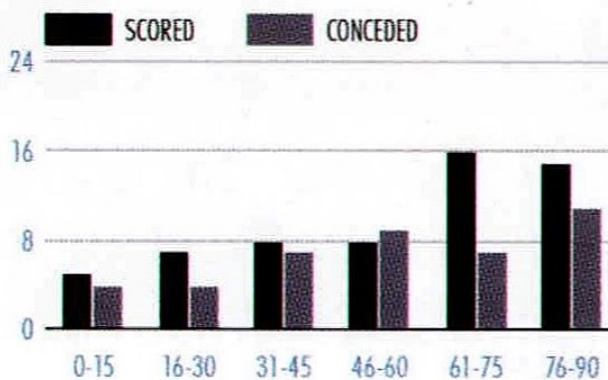


AV.GOALS CONCEDED PER GAME



FOULS

GOAL TIMES



GOAL TIMES



*Data doesn't include games played on Apr 15-18

YOUTH

THE SADDLERS' youth team won their third game in the space of a week to heap pressure on their rivals in the race for The Football League Youth Alliance North-West Division title...



Neil Woods' side cruised to a 3-1 victory over Burnley at Ray Hall Lane courtesy of Tobias Hayles-Docherty's brace and another sensational goal from midfielder Will Shorrocks.

Woods was content with his side's showing after a busy week.

"We had some very tired bodies out there," he admitted. "We've tried to change it as much as we could and we've actually started with seven first-years.

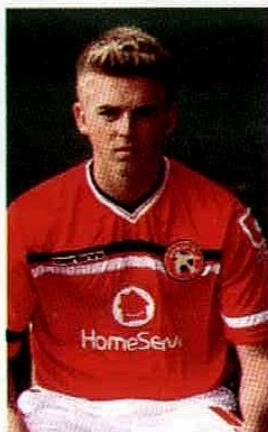
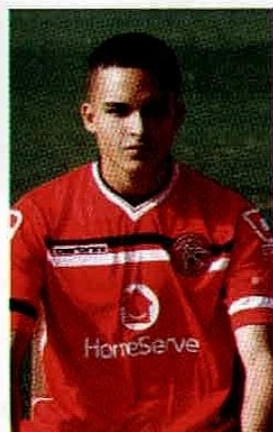
"Quality-wise it wasn't up to the levels that we can play at and have played at all season, but we stuck at it and scored two stunning goals. The first finish and the last finish were just stunning.

"Tobias' finish for the first goal, there was only one possible place that could go in and the goal from Will, we have seen him do that three or four times now this year.

"It really epitomises the level Will's playing at right now. He scored two in midweek and is a constant threat. I'm glad to see he's actually starting to get noticed because he works really hard.

"We probably needed that because we didn't have the energy and the brightness but I think it's probably another good learning curve. There are going to be days when you don't feel 100%.

"It was a grind; they've just said in the dressing room that they found it hard physically from the first minute to the last so we have to be really pleased with what we've done."



FOOTBALL LEAGUE YOUTH ALLIANCE NORTH WEST DIVISION FIXTURES 2015/16

Sat Aug 8	Accrington Stanley	H	12 noon	2-1
Sat Aug 15	Preston North End	A		0-0
Sat Aug 22	Shrewsbury Town	H		2-0
Sat Sep 12	Wrexham	H		1-0
Sat Sep 19	Carlisle United	A	12 noon	2-0
Sat Sep 26	Blackpool	H	12 noon	0-3
Sat Oct 3	Wrexham (LC2)	A		0-2
Sat Oct 10	Rochdale	A		1-1
Sat Oct 17	Morecambe	H	12 noon	6-0
Sat Oct 24	Fleetwood Town	A	12 noon	2-2
Sat Nov 7	Tranmere Rovers	H		2-0
Sat Nov 14	Burnley	A		2-1
Sat Nov 21	Port Vale	H		0-1
Sat Dec 5	Bury	H		2-3
Sat Dec 12	Wigan Athletic	A		0-2
Sat Jan 23	Rochdale	H		3-1
Sat Jan 30	Blackpool	A	12 noon	3-4
Sat Feb 6	Preston North End	H		4-0
Thu Feb 11	Carlisle United	H	12 noon	1-0
Fri Feb 19	Accrington Stanley	A	12 noon	6-1
Sat Mar 5	Shrewsbury Town	A		0-1
Sat Mar 12	Morecambe	A	12 noon	1-1
Sat Mar 19	Fleetwood Town	H	12 noon	3-0
Sat Mar 23	Wrexham	A	12 noon	2-2
Sat Apr 2	Tranmere Rovers	A		2-1
Sat Apr 9	Burnley	H		3-1
Sat Apr 16	Port Vale	A		2-0
Sat Apr 23	Bury	A		
Sat Apr 30	Wigan Athletic	H		

All home games are to be played at BCFA Headquarters, Ray Hall Lane, Great Barr, Birmingham, B43 6JF (kick-off 11.00am) unless otherwise stated. We will also compete in the FA Youth Cup and Midland Youth Cup. Fixtures subject to change - check saddlers.co.uk for updates.

FOOTBALL LEAGUE YOUTH ALLIANCE

NORTH WEST DIVISION - AS AT 15/04/2016

	P	W	D	L	F	A	GD	Pts
WIGAN ATHLETIC	23	16	2	5	48	17	31	50
BURY	23	15	5	3	52	25	27	50
WALSALL	25	14	5	6	50	26	24	47
SHREWSBURY TOWN	25	13	4	8	39	26	13	43
TRANMERE ROVERS	23	12	4	7	37	26	11	40
PRESTON NORTH END	25	12	3	10	37	38	-1	39
BLACKPOOL	23	10	6	7	39	27	12	36
FLEETWOOD TOWN	24	9	6	9	32	35	-3	33
PORT VALE	23	8	7	8	28	28	0	31
ACCRINGTON STANLEY	23	9	4	10	30	40	-10	31
WREXHAM	25	8	5	12	38	46	-10	29
ROCHDALE	23	7	5	11	34	40	-6	26
CARLISLE UNITED	27	7	4	16	35	48	-13	25
BURNLEY	25	6	2	17	32	59	-27	20
MORECAMBE	23	2	2	19	22	70	-48	8

BRAND NEW 65 REG KIA DEALS

EASY AS 1-2-3

1 LOW, LOW DRIVE AWAY PRICES



NEW KIA PICANTO 5DR
From only **£8000**



NEW KIA RIO 3DR
From only **£9220**



NEW KIA CEE'D 1
From only **£12220**

2 0% APR Representative* over 24 months OR 4.9% APR Representative* over 36 months



NEW KIA PICANTO SR7
From only **£135** Per month



NEW KIA RIO SR7
From only **£169** Per month



NEW KIA CEE'D SR7
From only **£189** Per month

WITH 3 YEARS SERVICING FOR ONLY £99[^]

Kia Picanto 1.0 5dr Representative example. Cash price £8,845.00. Deposit £1,000.00. Kia deposit allowance £500.00. 36 monthly payments £133.55. 4.9% APR Representative. Optional final payment/GMFV £3,332.00*. Total amount payable £9,639.80. Personal Contract Purchase. 36 month term. 6,000 miles P.A.*

3 3 YEARS PERSONAL CONTRACT HIRE



NEW 2015 KIA SPORTAGE
1.6 GDI
£198
PER MONTH

6,000 miles per annum
6 months payments in advance. Ts & Cs apply



NEW 2015 KIA SORENTO (7 seats)
Sorento KX-1
£289
PER MONTH

6,000 miles per annum
6 months payments in advance. Ts & Cs apply



The Power to Surprise.



Acorn Kia

www.acorn-group.co.uk

CANNOCK ROAD, BURNTWOOD, WS7 1JS. Tel: 01543 331353

The official fuel consumption figures in mpg (l/100km) for the Kia range of vehicles are between Urban: 29.1 (9.7) – 80.7 (3.5), Extra-Urban: 46.3 (6.1) – 94.2 (3.0) and Combined: 38.2 (7.4) – 88.3 (3.2). The official CO₂ emissions for the Kia range of vehicles are between 86 – 189g/km. MPG figures are official EU test figures for comparative purposes and may not reflect real driving results. 7 year /100,000 mile manufacturer's warranty. For terms and exclusions visit kia.co.uk or see your local dealer. *You will not own the vehicle until all payments are made. T&Cs apply. Subject to status. 18s or over. Guarantee/indemnity may be required. Further charges may be made subject to the condition or mileage of the vehicle. 24 months. At the end of the agreement there are 3 options: (i) Renew: Part exchange the vehicle. (ii) Retain: Pay the Optional Final Payment to own the vehicle or (iii) Return the vehicle. Anticipated annual mileage 6,000 miles, excess mileage charge 14.9 pence per mile. Kia Motors Finance RH1 1SR. Price and specification is subject to change without notice. Offers subject to stock availability, terms and conditions. *Care-3 covers routine servicing and excludes wear parts. Pictures for illustration purposes only.

BBC WM

95.6 FM | Digital

THERE is nothing quite like the protective qualities of a small National Geographic magazine. Seriously, your shins could feel really safe with a recent copy of said publication shoved down your socks – and this in a world where metal studs were still allowed and soon took on the same sort flesh-shearing qualities as your local butcher's ham-slicer.

But this was the 1970s, and football was far less complicated then for your average eight-year old. Admittedly, finally being presented with an actual pair of shin pads was a major excitement, not least because it meant your socks didn't stick out for half-an-inch on either side of your leg.

In your average under-9s team there was a certain order to things. If you were lucky you had a really good kid, and you gave him the ball whenever possible. Rumour had it that scouts from a local League team were watching him. Maybe you just had a really big kid who had just celebrated his ninth birthday yet looked in desperate need of a shave, and you gave him the ball whenever possible. And then there is a third category, one that was and probably still is inevitable in any form of sport that requires the help of volunteers and keen parents. Oh yes, the coach's son, who wasn't really very good but was guaranteed a place in the team either up front or in central midfield regardless of who else was available each weekend. And you gave him the ball whenever possible.

This was the natural order of things – most of us just glad to get a shirt with a number on between one and 11, and we would be deliberately veering off the grass and on to the path just to hear the satisfying clack and clatter of our studs on the harder ground. Now I'm sure things have largely changed for the better since then, and I'm fairly certain my 70s team-mates would all have coloured boots in lurid shades of green, lilac and mauve; they would all sport dubious hair-cuts and they would throw themselves to the floor

artistically in the hope of accruing a competitive advantage with all the élan of Cristiano Ronaldo. Born 35 years later, we'd have done just that.

But here is what troubles me when I look at the current generation of eight-year olds, taking their first steps in what is still a brilliant game. The really good kid and the big kid in 2016 were being courted by their local Football League or Premier League team at an age when they still needed nappy pants to guarantee a dry night. Now, as Year 3 pupils at Primary School, that football club often tells them who to play for, and when they can play – which might turn out a bit badly for their class-mates when they are ruled out of the school's first semi-final in living memory because of fears of burn-out. They wait expectantly for their star turn to arrive at the local parks pitch in a nice new shiny sponsor-clad club tracksuit just in the nick of time to send them through to the final – but that's the stuff of story-books, not a modern football reality.



For the one in a thousand that makes it, perhaps this makes sense. The sports science, the attention to detail, the skills-based training may all be worthwhile. But for the other 999 who will ultimately fall short of their dreams? I'm just not sure they should be growing up so quickly. Yes, the naivety of the 1970s is something I view through rose-coloured glasses, and I'm not suggesting anyone bungs a copy of National Geographic down their socks again. But you only get one shot at being an eight-year old, and it's a job that should ideally be as uncomplicated as possible.


RICHARD WILFORD
BBC WM



Jumpers for goalposts – the innocence of youth in a bygone age...

“ This was the 1970s, and football was far less complicated then for your average eight-year old...”

”



SMITH MORRIS

Our southern-based Saddlers chew the fat...

NM: Good afternoon Andy. It's another big game at the Banks's tonight!

AS: Very true. I wonder how many Saddlers' fans, as they scraped the ice from their windscreens in the Oldham car park on April 9th, thought to themselves that any chance of automatic promotion had slipped away. Yet that superb win at Priestfield Stadium last Tuesday night set us dreaming again - could we claim six more points and Burton continue to wobble? Whatever happens, it's incredibly exciting to be part of the end-of-season drama.

NM: Oh yes, it really is a swashbuckling adventure...

AS: For a moment there I thought you were going to say "a rollercoaster ride", which would have been apt as I think I have

evidence of the first time that phrase was used in a footballing sense.

NM: Really, how did you find that?

AS: I was attending a car boot sale in Darlaston, mainly to see if I could pick up any clothes for my collection of Sindy dolls, when I found a programme from the Walsall v Darwen game in the 1890s. In it there is a column entitled "Messrs A. Smyth and N. Morrison discuss recent events in a droll manner". I have copied the exchange and reproduce it below.

NM: Upon my life Mr. Smyth, I see you have ventured to this afternoon's spectacle clad in the garb of a convicted miscreant. Are the local "Peelers" aware that you have absconded from your allotted gaol cell?

AS: How I have fooled you Mr Morrison. I sport these garments as today our beloved pets face Darwin and I seek to remind our colonial visitors of their criminal heritage.

NM: My dear friend, I fear that you have confused the mill town of Darwen with the antipodean settlement of Darwin.

AS: Alas, not for the first time my own japes have confounded me!

NM: This is dire stuff. How on earth did this pair keep a page in the programme?

AS: Don't interrupt. Let me finish.

NM: And what thoughts have you of the progress of our men this year?

AS: Our spirits have many times been aloft and yet oft have they been dashed. One might liken the experience to a bumpy charabanc ride in mountainous terrain.

NM: Or indeed to a ride on the latest American invention, the roller-coaster.

AS: I am unfamiliar with this piece of machinery. In fact I consider the charabanc to be an unnatural and unhealthy form of transportation.

NM: Extraordinary to think that even in those days supporting Walsall was never straightforward. So it's continued to this day, you just never know what twist of fate lies ahead. Incidentally, do you know how long those two jokers continued in the programme for?





AS: I think it was until the early 1900s, when they were replaced by "Talking Programmes with Stephen Davies Esq."

NM: Back to 2016 and I am always concerned when we play teams who have out of form, as Swindon have been in recent weeks. I am sure they'll stay up but they will want to pick up another win or two before the end of the season. Swindon tend to live life in the fast lane too; they either seem to be challenging for promotion or fighting relegation.

AS: They have a bright young Head Coach in Luke Williams and I am sure they won't go down. With Bristol Rovers challenging for promotion in League Two there may be a tasty local derby for them next season.

NM: Will Swindon be welcoming The Gas to the County Ground again next season? I must admit that I am hoping for Accrington to clinch that third spot. Their fans must be dreaming of two games against Bolton as much as we are hoping to play Villa next term.

AS: It's a case of whoever keeps their nerve at this stage of the season. A couple of weeks ago Burton looked uncatchable but now it seems that Wigan are destined for the title and our Staffordshire rivals are decidedly vulnerable. Watch out for in-form Bradford too - what a game that promises to be on Saturday!

NM: Then follow that with a derby with Shrewsbury and you have an astonishing run-in. They say that players live for the big games and

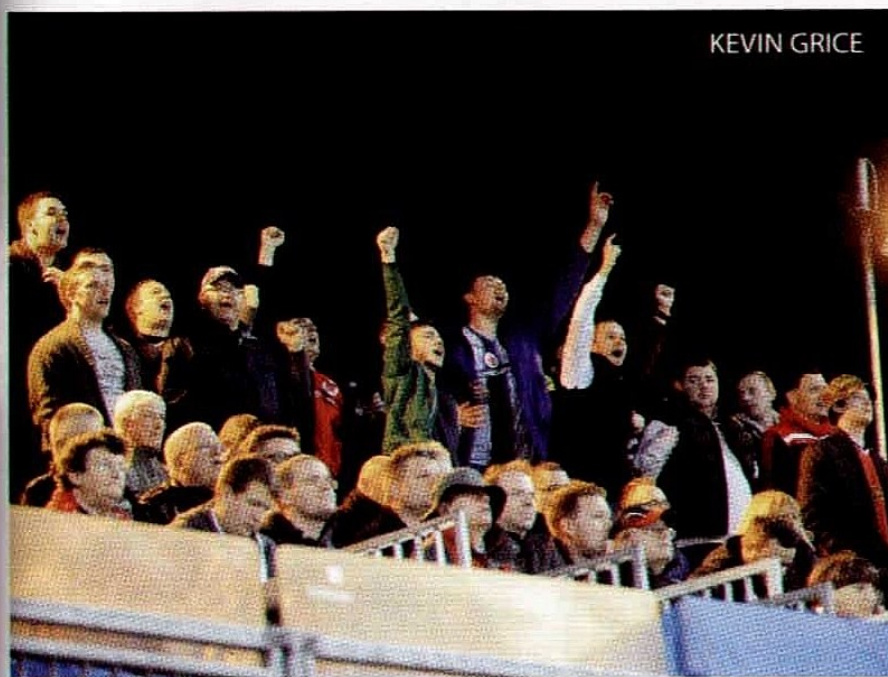
“ They say that players live for the big games and it's the same as fans, if we don't enjoy these types of pressure situations we really should have another hobby. Collecting Cindy dolls for example... ”

It's the same as fans, if we don't enjoy these types of pressure situations we really should have another hobby. Collecting Cindy dolls for example...

AS: Don't mock it, I find it an excellent way to study the fashions of the modern era.

NM: Not that it's improved your fashion sense. Just why are you wearing a grey shirt with large arrows printed across it?

AS: It's a very long story...



KEVIN GRICE



IN THE COMMUNITY



Swifty is sponsored by
Guardian Support



ON BALL BOY AND GIRL DUTY

TODAY'S ball boys and girls, who are sponsored by WTi Fasteners, are provided by Colmers School of Rubery.

The group will be made up of the Year 7 boys' and girls' football teams. The girls recently came second in the South Birmingham Futsal Tournament, whilst the boys are having a good season in the King's Norton District Football League.

On duty tonight will be Mya Campbell, Lucy Morris, Neave Sproson, Stephanie Tottimch, Keeley Rhodes, Connie Dutton, Isabella Dimbylow, Mason Dingley, Tom Fowke, Harry Neal, Evan Close, Sam Rowbottom, Harvey Room and Billy Gavin.

We hope that everyone involved has an enjoyable evening and keeps the game flowing freely.



ASPIRE 2 ENGAGE

THERE was a late change to the group that joined us as part of our Aspire 2 Engage project at our last home game.

We were delighted to welcome Broadway West Sports Association, a voluntary organisation which aims to bring back to use the historic Broadway West playing fields for the interest of Walsall residents. Their aim is to safeguard the future of the playing fields for sports to benefit future generations of Walsall residents.

Located next to the Morrison's supermarket, which was the site of the old Fellows Park home of Walsall Football Club, the playing fields had until recently been closed for public use for many years due to toxic contamination. The site became famous for being the playing fields where ball games were not allowed. Thanks to local public support Walsall council have spent over £400,000 to bring the playing fields back to public use.

Broadway West Sports Association wants to benefit the residents of Walsall and the surrounding area, by associating together the residents, voluntary and other organisations of the locality in a common effort to advance health and community cohesion and to provide facilities in the interests of social welfare, health and well-being, for recreation and

leisure time with the objective of improving the quality of life for the residents.

In the future they are hoping to rebuild the pavilion on the site as well as attract funding from sports bodies to further enhance and develop the site to make it a truly first-class site for local sports.

Currently there are cricket clubs, youth organisations and even an archery club using the playing fields to engage with local residents. However they currently have scope for more sports to use the facilities. They are especially keen to hear from any potential football teams who would want to use the site for their home matches. For any further information please enquire with Riz Ahmed on 07771-791136.

Meanwhile this evening we are delighted to welcome members of Paddock Housing Co-operative.

Located in the Chuckery area of Walsall, tenants from Paddock Housing become members of the Co-operative who, voluntarily and without pay, control and maintain services to maximise the benefits for all tenants.

The Co-op membership organise their own repairs and maintenance service, control rent arrears, operate their own waiting list, interview applicants, allocate properties and take an active part in many other areas involved in the day to day running of the Co-op.

If you would like to find out more about Paddock Housing Co-operative, please contact their Managing Agents, Bchs (Birmingham Housing Co-operative Services) on 0121-442 5001.

We hope their guests have an enjoyable evening with us.



LOG-ON TO OUR WEBSITE

for more details of all of our activities visit www.walsallfccp.co.uk

Follow Walsall FC Community Programme on Twitter: @WFCCP

KICK IT OUT
TACKLING RACISM & DISCRIMINATION

KICKITOUT.ORG

HANDS ON REPORTING!

THE NEW, FREE KICK IT OUT APP ALLOWS YOU TO REPORT ALL INSTANCES OF DISCRIMINATION ACROSS EVERY LEVEL OF THE GAME

- ✓ ATTACH **PHOTOS** AND **VIDEO** TO REPORTS
- ✓ REPORT **SOCIAL MEDIA** ABUSE
- ✓ REPORT **CONFIDENTIALLY**



DOWNLOAD
THE NEW
APP TODAY



Download on the
App Store



ANDROID APP ON
Google Play



FACEBOOK/KICKITOUTOFFICIAL



@KICKITOUT



INFO@KICKITOUT.ORG



0800 169 9414



@KICKITOUT

MARGOT MARTINI CUP WALSALL LEGENDS VS

WEDNESBURY ATHLETIC FC

SATURDAY 7TH MAY
CHASETOWN FC

THE SCHOLARS GROUND, CHURCH ST WS7 3QL

KICK OFF 3PM

You can save a life.
teammargot.com



TICKETS: £4 ADULTS
£2 CHILD, U6'S FREE



swab4margot



teammargot



THE PERSON BEHIND THE PLAYER

Club Journalist, Daniel Briggs, finds out more about the talented Anthony Forde...



So Anthony, what's your earliest memory?

Playing football at home with my brother and my dad. We played in the house and also in the garden.

What sort of child were you?

I was quite a good child but probably quite annoying at the same time because I always wanted to play sports and run around. I never really wanted to sit down and watch TV or anything like that.

What are you best at outside of football?

Hurling and Gaelic football in Ireland.



What would you like to be better at?



I play golf but I'd like to improve.

What would you be if you weren't a footballer?

I think I'd still be involved with sport, probably playing Gaelic football at home. You still work when you play Gaelic so I'd look to do something like coaching or physiotherapy as well.

Who is the biggest star name in your phone book?

Bakary Sako or Kevin Doyle.



Which footballer (all-time) do you most admire and why?

Cristiano Ronaldo - He's an unbelievable player who's got everything. He's a great professional.



What is the best thing about being a footballer?

For me, everything. I feel lucky to do something I love as my job.

What is the most challenging aspect of being a footballer?

The discipline with your diet. You've got to look after yourself and watch what you eat and drink to be the best professional you can be.

What is your most treasured possession?

I've got three shirts - the one with from my Premier League debut with Wolves, the Wembley shirt with Walsall last year and a shirt from playing with Ireland U19s. I keep those shirts back home in Ireland.

What do you like to do on your day off?

I like to chill out or have a game of golf.

Do you have any pre-match superstitions?

Not really.

What kind of people do you dislike?

Arrogant and selfish people.

What makes you angry?

When people don't treat others how they want to be treated.

What is the best decision you have ever made?

Leaving my family when I was 15 to come to England to play football. It was tough.

What is the best piece of advice you have ever been given?

To treat others the way you'd like to be treated. Smile and enjoy yourself.

What are you most proud of?

I'm proud of playing at Wembley and in the Premier League, as well as for my country.

What is the one thing you can't live without?

My family.



ANTHONY FORDE

TOP FIVES

STADIUMS YOU'VE PLAYED AT

- 1) Stamford Bridge
- 2) Emirates Stadium
- 3) St James' Park
- 4) Wembley Stadium
- 5) The Stadium of Light

FAVOURITE IRISH FOOTBALLERS

- 1) Roy Keane
- 2) Robbie Keane
- 3) Damien Duff
- 4) Paul McGrath
- 5) Shay Given

TV PROGRAMMES

- 1) Impractical Jokers
- 2) Criminal Minds
- 3) Entourage
- 4) Prison Break
- 5) Breaking Bad

SPORTS

- 1) Football
- 2) Golf
- 3) Hurling
- 4) Gaelic Football
- 5) American Football

FOODS

- 1) Steak
- 2) Curry
- 3) Salmon
- 4) Irish stew
- 5) Chinese

Every goal. Every Saturday. Football League Tonight.



5

9pm on Channel 5

Watch the best of the action from the Sky Bet Championship at 9pm,
followed by every goal from Sky Bet League 1 and League 2 from 10pm.



#FootballOn5



MATCH ACTION

A round-up of the action from our away games at
Sheffield United, Oldham Athletic
 and **Gillingham** courtesy of Kevin Grice



• Advertising • Commercial • PR • Studio • Industrial • Events • Aerial • Weddings & Portraits • Traditional/Contemporary •
 • View and order prints on line • Discount for all Saddlers fans •
 m: 07714 278690 • dlinneyphotography@yahoo.co.uk • www.dlinneyphotography.com



EXCLU
FOR
OFFER AVAILABLE

SEASON MEMBERSHIP
£850 INCLUSIVE OF:

- *Season Ticket*
- *Lounge Access*
- *Car Park*
- *Matchday Programme*
- *Team Sheet*
- *Half Time Refreshments*
- *4 Legend Events Per Season*
- *In the exclusive 1888 leather seats, includes Friendly and Cup games*

SEASON LOUNGE PASS
£250 SEASON. INCLUSIVE OF:

- *Full Lounge Access*
- *Car Park*
- *Matchday Programme*
- *Team Sheet*
- *Half Time Refreshments*
- *4 Legend Events Per Season*
- *In the exclusive 1888 leather seats, includes Friendly and Cup games*

SIVELY YOU

LE UNTIL MAY 2ND

TESTIMONIALS

"Since joining I have thoroughly enjoyed the matchday experience at The Banks's Stadium, in the comfort and exclusivity of the 1888 Lounge."

Laurie Shore

"With an all inclusive membership and the exciting prospect of 4 legends return events, I had no hesitation in renewing my Season Ticket for the 2016 / 2017 season."

Brin Morgan



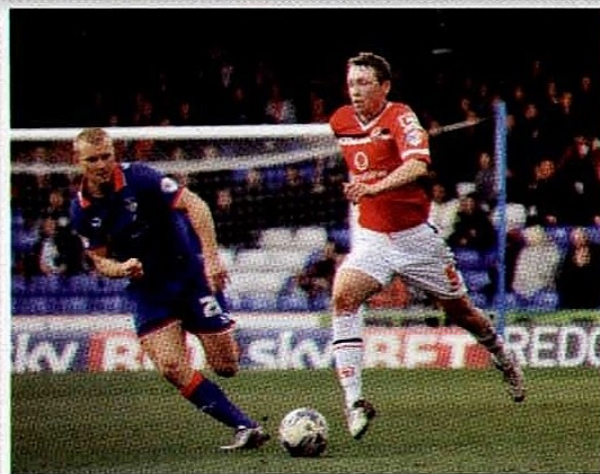
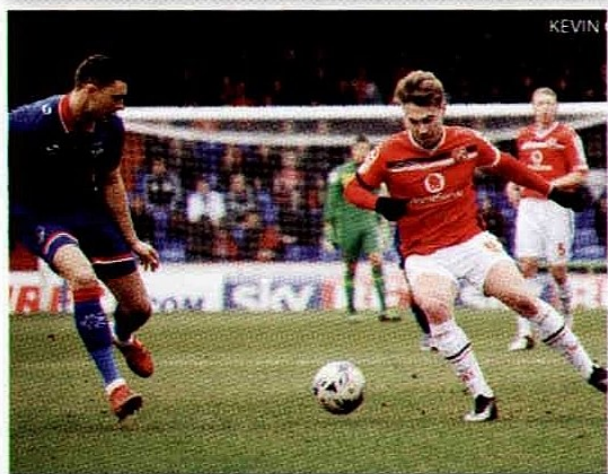
1888 Lounge

FOR MORE INFORMATION CALL OUR COMMERCIAL DEPARTMENT
ON 01922 651 400 OR EMAIL WAYNE.THOMAS@WALSALLFC.CO.UK

TERMS AND CONDITIONS APPLY. GUESTS WITHIN THE LOUNGE AREA MUST BE OVER THE AGE OF 16.
DRESS CODE FOR THE ROOM IS SMART CASUAL. NO RIPPED JEANS, NO TRAINERS OR SHORTS ARE PERMITTED WITHIN THE ROOM

MATCH ACTION

Continued



KEVIN GRICE FREELANCE PHOTOGRAPHER

Sports – Weddings – Christenings – Proms – Presentations – Portraiture

Email: kghotshots@westbrom.uk.com Call: 07828-816 637



The most prestigious event of the year

THE WALSALL FC AWARDS EVENING

SUNDAY 8TH MAY



DOORS OPEN 7:00^{PM} | TICKETS £37.50 PER PERSON

TABLE OF 10 – £375.00

OR

**£500.00 TO INCLUDE TABLE OF 10 AND DRINKS
PACKAGE ON THE EVENING**

DRINKS PACKAGE INCLUDES: 3 X CORONA OR BUDWEISER, 3 X DESPERADOS, 3 X BULMER'S ORIGINAL
3 X KOPPARBERG, 1 X HOUSE RED, 1 X HOUSE WHITE, 1 X HOUSE ROSE, 2 X PROSECCO

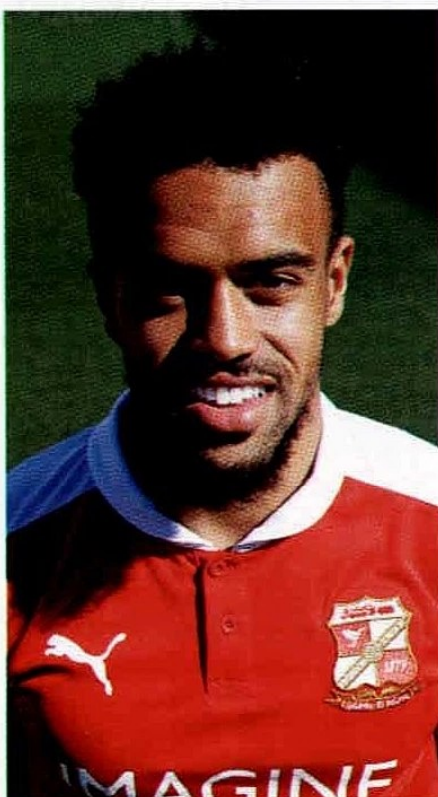
TO BOOK YOUR TICKETS VISIT ETICKETING.CO.UK/WALSALLFC
OR CALL THE TICKET OFFICE ON 01922 651 416





TAKE FIVE

KEY COGS...



NICKY AJOSE STRIKER

The talented front-man has been in superb form for the Robins this term and was up against our very own Romaine Sawyers and Gillingham's Bradley Dack for the coveted League One Player of the Season award.

Having previously served the club on loan from Peterborough United at the start of the 2013/14 season, he returned on a permanent basis from Leeds United in September 2015 and has gone on to find the net on 23 occasions.

A dynamic performer, he started his career with Manchester United before moving on to Peterborough United having found his path to the first-team blocked at Old Trafford.

He's also had a number of loan spells with the likes of Scunthorpe United, Chesterfield, Crawley Town and Bury, as well as spending time at Leeds United, but it's at Swindon where he has produced his best form.

ANTON RODGERS MIDFIELDER

An assured and technically-gifted figure in the heart of the team, he arrived at the County Ground during the summer of 2014 after leaving Oldham Athletic.

He cut his teeth in the game with Chelsea, where he was part of the Academy system, but it was after he moved on to Brighton & Hove Albion that he started to make his way in the professional game.

His first-team opportunities were limited with the Seagulls and after a spell on loan at Exeter City where he gained much-needed competitive experience, he was snapped up by Oldham at the start of the 2013/14 campaign.

The son of former Liverpool manager, Brendan Rodgers, he has established his play in the Robins' side over the past couple of seasons and with a total of 38 outings this term, he is a key cog.





BRADLEY BARRY

DEFENDER

The assured 21 year-old defender joined the club following a successful trial spell at the start of the season from Championship outfit, Brighton & Hove Albion, where he came up through the ranks and worked alongside current Swindon Head Coach, Luke Williams.

Whilst he failed to make a first-team outing for the Seagulls, he has established himself as a regular in the Robins' back-line this term and has a total of 36 outings to his name in what is his first taste of football at this level.

The nephew of Everton and England midfielder, Gareth Barry, he has made a seamless transition into the demands of professional football, playing with a determination and commitment that has served him and the club extremely well.

As such he has emerged as a popular figure both on and off-the-field.

RAPHAEL ROSSI-BRANCO

DEFENDER

Another player who was part of the Academy set-up at Brighton & Hove Albion, the resolute Brazilian central defender joined the Robins during the summer of 2013 following a successful trial spell.

Since then he has gone on to establish himself in the team and has mustered almost 90 senior outings for the club in all competitions.

A popular figure who is comfortable on the ball and strong in the air, he was a regular last term as the club made it through to the play-off Final and this season has another 37 appearances under his belt where he has weighed in with one goal - in the victory over Scunthorpe United back in November.

The 25 year-old will be working hard to keep The Saddlers at bay this evening.



FABIEN ROBERT

MIDFIELDER

An attack-minded midfielder with plenty of skill and ability, he joined the club during the summer following a trial spell.

The Frenchman, who has represented his country at various youth levels, was with Ligue 1 outfit, FC Lorient, in his homeland, where he came through the ranks and had loan spells with the likes of Boulogne and on these shores with Doncaster Rovers in the second half of the 2011/12 campaign.

He made an impressive start to the current season with three goals within the opening month and whilst he has only been able to add one further strike to that since then, his talent has served the club well.

The 27 year-old will be looking to get forward at every opportunity this evening

THE UNLIKELY LADS

Football historian, Leigh Edwards, profiles ten big-name players not normally associated with today's visitors...



**MIKE
SUMMERBEE**

Brilliant winger Mike Summerbee was capped eight times by England after leaving Swindon Town. Initially with Cheltenham Town, he moved to the County Ground in March 1960 and was an important figure in Swindon's 1962-63 promotion success. He netted 39 goals in 218 League games prior to joining Manchester City in August 1965, amassing a vast collection of domestic and European honours under the Joe Mercer/Malcolm Allison partnership at Maine Road. Later playing for Burnley, Blackpool and Stockport County, he became a successful businessman and his son Nicky also starred for Swindon Town.



**OSSIE
ARDILES**

Former Argentina international midfielder Ossie Ardiles made two League appearances for Swindon Town in 1989-90. Together with Ricky Villa, the World Cup winner made headlines with his transfer from Huracan to Spurs in July 1978. He helped win the FA Cup in 1981 and UEFA Cup in 1984, moving to QPR in May 1988. Appointed Swindon's player-boss in July 1989, he plotted their 1989-90 Second Division play-off final success but they were denied promotion due to an illegal payments scandal. He took charge of Newcastle United in March 1991, then managed West Brom and Spurs before coaching overseas.



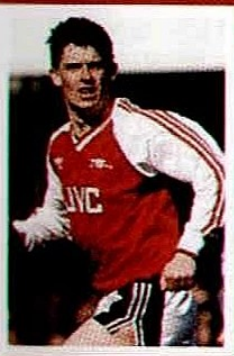
**DAVE
MACKAY**

Former Scotland international wing-half Dave Mackay had a spell as Swindon Town's player-manager. He helped Hearts win all three major Scottish honours before moving to Spurs in March 1959, skipping their 1960-61 'double' success and two further FA Cup triumphs. He joined Derby County in July 1968 and was joint 'Footballer of the Year' as they won the Second Division title in 1968-69. Swindon's player-boss from May 1971 until November 1972, scoring once in 26 League games, he managed Nottingham Forest, Derby's 1974-75 League Championship, The Saddlers, Doncaster and Birmingham. He died in March 2015.



**GLENN
HODDLE**

Ex-England international midfielder Glenn Hoddle was player-manager as Swindon Town reached the Premiership in 1992-93. Signing professional for Tottenham Hotspur in April 1975, he starred as they won promotion in 1977-78, then won the FA Cup in two consecutive seasons and the UEFA Cup in 1984. He moved to Monaco in July 1987 and helped win the French title in 1987-88, becoming Swindon's player-boss in August 1991. Scoring once in 64 League games for the Robins, he left to take charge of Chelsea after the 1992-93 play-off final triumph and later managed England, Southampton, Spurs and Wolves.



**BRIAN
MARWOOD**

Former England international winger Brian Marwood helped Swindon Town to win promotion to the top-flight in 1992-93. Signing professional for Hull City in February 1978, he was leading marksman in their 1982-83 promotion triumph and moved to Sheffield Wednesday for £115,000 in August 1984. He joined Arsenal for £600,000 in March 1988 and starred in their 1988-89 League Championship success, moving to Sheffield United for £350,000 in September 1990. Joining Swindon in March 1993, he scored once in 11 League games and joined Barnet in August 1993. He became PFA chairman, since working in the media.



**TERRY
FENWICK**

Versatile defender Terry Fenwick was capped 20 times by England before joining Swindon Town. Signing professional for Crystal Palace in December 1976, he featured in their 1978-79 Second Division title triumph and followed Terry Venables to QPR in December 1980. He scored in the 1982 FA Cup final, then skippered Rangers to the Second Division title in 1982-83 and 1986 League Cup final. Reunited with Venables at Tottenham Hotspur in December 1987, he joined Swindon in September 1993 and made 28 League appearances while at the County Ground. He later managed Portsmouth and Northampton Town.



**FRANK
McAVENNIE**

Former Scotland international striker Frank McAvennie had a loan spell at Swindon Town in 1993-94. He starred for St Mirren before joining West Ham in June 1985 and was top scorer as they were third in the top-flight in 1985-86. Moving to Celtic in October 1987, he scored twice in their 1988 Scottish Cup final triumph and rejoined West Ham in March 1989. He helped win promotion in 1990-91, moving to Aston Villa in August 1992, then Celtic again. Loaned to Swindon in February 1994, he made seven League appearances before rejoining St Mirren. His colourful life story is titled 'Scoring - An Expert's Guide'.



**NEIL
WEBB**

Midfielder Neil Webb was capped 26 times by England before joining Swindon Town. The son of former Reading favourite Dougie Webb, he turned professional with the Royals in November 1980 and moved to Portsmouth in July 1982. He helped win the Third Division title in 1982-83, then moved to Nottingham Forest in June 1985 and scored in their 1989 League Cup final triumph. Sold to Manchester United for £1,500,000 in June 1989, he was an FA Cup winner in 1990 and rejoined Forest in November 1992. He was loaned to Swindon in October 1994, making six League appearances, then played for Grimsby Town.



**NEIL
RUDDOCK**

Ex-England international central defender Neil Ruddock played for Swindon Town during the 2001-02 campaign. A former Millwall apprentice, 'Razor' turned professional in March 1986, moving to Spurs a month later. He returned to Millwall in June 1988 and joined Southampton in February 1989. Appearing in the 1992 ZDS Cup final, he rejoined Spurs in July 1992 and joined Liverpool for £2,500,000 in July 1993. He starred in their 1995 League Cup final triumph, then played for West Ham and Crystal Palace before joining Swindon in August 2001. Scoring once in 15 League games, he has since worked in the media.



**PAUL
INCE**

Midfielder Paul Ince gained 53 England caps before playing for Swindon Town. Initially with West Ham, he moved to Manchester United for £1,000,000 in September 1989 and was England's first black captain. He amassed numerous honours, including the 'double' in 1993-94, joining Inter Milan for £8,000,000 in July 1995. Later with Liverpool, Middlesbrough and Wolves, he joined Swindon in August 2006 and made three League appearances while at the County Ground. He became Macclesfield Town's player-boss in January 2007 and has since managed MK Dons, Blackburn, MK Dons again, Notts County and Blackpool.

US & THEM

Ian Crichton looks at Saddlers' links with today's opposition...

Saddlers' Fact File

Best home result: 5-0 (24.04.39 & 20.10.81)
Worst home result: 1-4 (26.12.2014)
Best away result: 4-1 (15.04.39 & 26.08.2000)
Worst away result: 0-5 (15.10.1927)

Q&A

Which player, who scored 73 goals in 142 games for Swindon between 2002 and 2005, spent just one season with Walsall before being released in July 2010 after only scoring three times for The Saddlers in 27 appearances?

Sam Parkin.

Do you remember?

Scotsman Willie Penman, who ventured south after starting his career with Dundee and Glasgow Rangers. Willie was an old-fashioned inside forward who was part of the Swindon team which won the 1969 League Cup at Wembley and he came off the bench to replace another future Saddler, John Smith. After playing more than 100 times for the Robins, Willie spent three seasons delighting the crowds at Fellows Park with his skilful and cultured style of play and he scored six times for Walsall in 135 appearances.



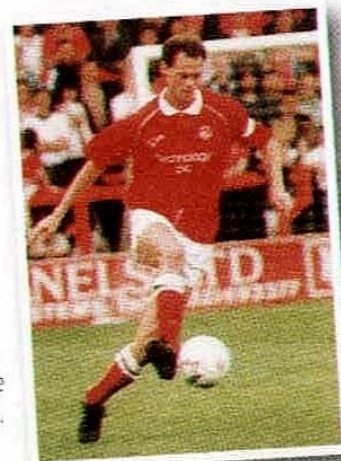
Played for both sides

Players who have served both clubs include: Dave Bamber, Alf Dean, Peter Eastoe, Colin Gordon, Ashley Grimes, Michael Husbands, Chris Jones, John Kelly, Jimmy Kelly, Tommy Mooney, Sam Parkin, Tommy Phillipson, Willie Penman, David Preece, Howard Pritchard, Fitzroy Simpson, John Smith, Dave Syrett, Jamie Vincent, Adrian Viveash and Sofiene Zaaboob.



Did you know?

- Walsall have played Swindon 92 times in The Football League with The Saddlers winning 31 games and losing 34 and honours are even in Cup ties with one victory each.
- John Smith and Kevin MacDonald were two ex-Walsall players who went on to manage Swindon, whilst Dave Mackay, Swindon's player-manager from 1971 to 1972, took over at Fellows Park in March 1977 only to depart for Kuwait 14 months later.
- Walsall legend Tony Richards scored 198 goals during his Saddlers' career but in the 1958 game against Swindon he hit the headlines for another reason when he went between the posts after our 'keeper, John Savage, had been sent off and promptly saved a penalty!
- In the final game of the 1975/76 season Trevor Anderson scored a hat-trick of penalties for Swindon Town against Walsall.
- Swindon are unbeaten on their last five visits to Walsall and we have won just one of our last 8 home games against the Robins.



MATCH OF THE DAY

SWINDON TOWN I WALSALL I

(League Two) Saturday 5th May 2007

On the final day of the 2006-07 season Walsall visited the County Ground looking for the victory which would clinch the League Two title, whilst Swindon required just one point to secure automatic promotion. The home side shaded the first half without really testing Clayton Ince, but after the break the Robins stepped up the pace and were unlucky when Lee Peacock's shot came back off a post. Nevertheless they didn't have to wait much longer for the breakthrough and after 52 minutes Jerel Ifil's diving header beat Ince at the near post. Hector Sam and Darren Wrack came off the bench and Walsall threw caution to the wind but it was 80 minutes before we came close when skipper Michael Dobson's long-range effort just missed the target. With time running out Phil Smith produced a great save to deny Martin Butler but just as we looked down and out Dean Keates scored a dramatic equaliser from 20 yards with virtually the last kick of the match. With Hartlepool beaten it meant Walsall were Champions but Swindon also had good reason to celebrate and it was Paul Sturrock's fourth promotion of his managerial career.





PLAY MAKER

MUSIC | PASSION | JORDY HIWULA

Jordy Hiwula picks his top tracks...

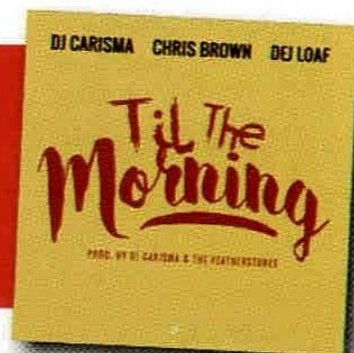


RIHANNA FT. DRAKE WORK

It's a song that was only released a couple of months ago but it's one of those tracks that everywhere you go it's being played and people are singing it.

CHRIS BROWN TIL THE MORNING

One of my friends made a CD mix and it's one of the tracks from that CD that just stood out to me. It's always on repeat in the car and obviously Chris Brown is an artist who has brought out loads of songs and this is one of his better ones.



FUTURE WICKED

To be honest I've only recently started listening to future but since I have, I love pretty much all of his tracks. He brought out a collaboration album with Drake recently and it's got a lot of good songs on it.

STORMZY ONE TAKE FREESTYLE

He's been the grime artist of the last few years. Lots of people know him now and again I seem to listen to a lot of his songs. This is the one that stands out for me though.



WSTRN IN2

I hadn't heard of Wstrn before they brought this song out but it gets played on the radio all of the time. It's just one of those songs that has a catchy tune and everyone sings along to so it has to go in my top five.

LISTEN TO THESE CHOICES AT TODAY'S GAME...

TICKET OFFICE

Contact Details

You can contact the Banks's Stadium Ticket Office in any of the following ways:

T: 01922 651 414 / 416

F: 01922 613 202

E: tickets@walsallfc.co.uk

OPENING HOURS

The Banks's Stadium Ticket Office is open Monday to Friday, 9.15am-4.30pm and we are open from 10.00am on Saturday home matchdays as well as after the game. Please note that we are closed on Saturday away matchdays and also after midweek home games.

AWAY



Bradford City

Sky Bet League One
Saturday, April 23rd
Kick-Off 3.00pm

Walsall fans have been allocated an initial 800 tickets in the TL Dallas Stand (South). Further allocation is available should we need it.

This game is NOT all-ticket.

Ticket prices are as follows:

Adults £25.00, Over 60s/Student (valid ID) £15.00.

Under-16 £10.00, Under-11 £5.00 (Under-11

must be purchased with a full paying adult).

Ambulant and Wheelchair Disabled (providing they are claiming Disabled Living Allowance at the higher or middle rate) price relevant to age band with carer free of charge.

Tickets are on sale from the Banks's Stadium Ticket Office until 3.00pm on Friday 22nd April 2016.

Apologies for incorrect information appearing in Saturday's Matchday Programme.



HOME



Shrewsbury Town

Sky Bet League One
Tuesday April 26th
Kick-Off 7.45pm

Tickets for this game are now on sale at the usual Category A advance prices.

In the HomeServe Stand its £23.00 for adults (£25.00 matchday price), £7.50 for seniors and unaccompanied juniors in Blocks J&K (£19.50 matchday price) and £11.50 for juniors as part of Family Ticket upgrade for season-ticket holders (£12.50 matchday price).

In the Community Stand its £24.50 for a Family Ticket of 1 adult and 1 junior (£26.50 matchday price), £11.50 for an extra junior for Family Ticket (£12.50 matchday price), £22.50 adults (£24.50 matchday price), £14.50 for unaccompanied juniors (£16.50 matchday price), £16.50 for seniors (£18.50 matchday price) and £11.50 for juniors as part of a Family Ticket upgrade for season-ticket holders (£12.50 matchday price).

In the Tile Choice Stand Lower Tier its £18.50 for adults (£20.50 matchday price) and £14.50 for seniors and unaccompanied juniors (£16.50 matchday price). In the Middle and Upper Tiers its £24.50 for a Family Ticket of 1 adult and 1 junior (£26.50 matchday price), £11.50 for an extra junior to accompany a Family Ticket (£12.50 matchday price), £22.50 for adults (£24.50 matchday price), £16.50 for seniors and unaccompanied juniors (£18.50 matchday price) and £11.50 for a junior as part of a Family Ticket upgrade for season-ticket holders (£12.50 matchday price).



HOME



Fleetwood Town

Sky Bet League One
Monday May 2nd
Kick-Off 12.15pm

Tickets for this game are now on sale at the usual Category B advance prices.

In the HomeServe Stand its £21.50 for adults (£23.50 matchday price), £16 for seniors and unaccompanied juniors in Blocks J&K (£18 matchday price) and £10 for juniors as part of Family Ticket upgrade for season-ticket holders (£11 matchday price).

In the Community Stand its £23 for a Family Ticket of 1 adult and 1 junior (£25 matchday price), £10 for an extra junior for Family Ticket (£11 matchday price), £21 adults (£23 matchday price), £13 for unaccompanied juniors (£15 matchday price), £15 for seniors (£17 matchday price) and £10 for juniors as part of a Family Ticket upgrade for season-ticket holders (£11 matchday price).

In the Tile Choice Stand Lower Tier its £17.50 for adults (£19.50 matchday price) and £13.50 for seniors and unaccompanied juniors (£15.50 matchday price). In the Middle and Upper Tiers its £23 for a Family Ticket of 1 adult and 1 junior (£25 matchday price), £10 for an extra junior to accompany a Family Ticket (£11 matchday price), £21 for adults (£23 matchday price), £15 for seniors and unaccompanied juniors (£17 matchday price) and £10 for a junior as part of a Family Ticket upgrade for season-ticket holders (£11 matchday price).



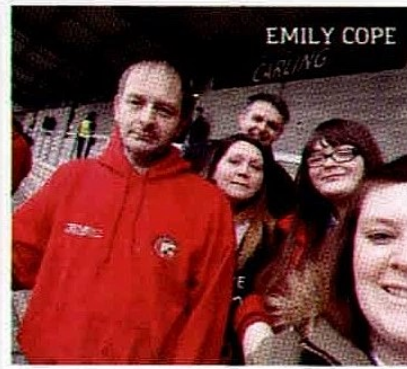


ON THE ROAD

In association
with



Your local Ford, Kia
and Mitsubishi Dealers



EMILY COPE



MATTHEW DODD

ROBERT SHARP



Fan photos from our road trips this season...

SEND in your #OnTheRoad
selfies to
ontheroad@walsallfc.co.uk for a
chance to win a brand new car!

We've teamed up with Acorn
Kia to offer this fantastic prize to
the supporter who sends in a
photo from the highest number of
away games throughout the
course of the 2015/16 season.

There are also spot-prizes for
fans who tweet a picture of the
club's #OnTheRoad community
car on its way to away games, to
@AcornKia.

Get involved, just like these
fans...



CHARLIE
AND
GEORGE
DUTTON



JOSH PEACH

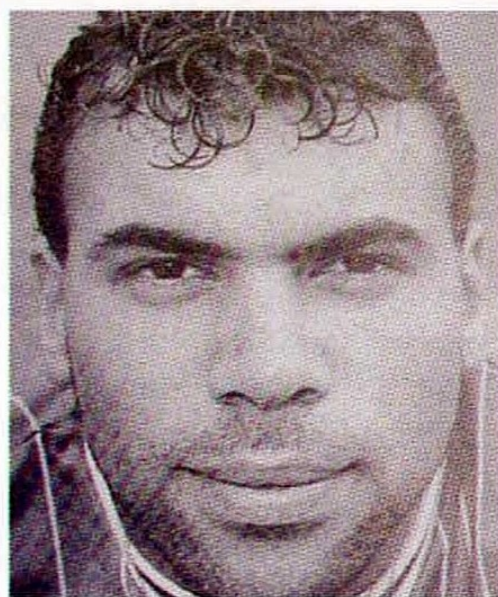
NAMES & GA

20.10.1981. WALSALL 5 SWINDON 0. DIVISION THREE

Swindon arrived at Fellows Park with an unbeaten away record but found themselves on the wrong end of a superlative Saddlers' display. Alan Buckley back to his best, showed all his sharpness and composure to give us the lead on ten minutes and then doubled our lead from the penalty spot just before half-time. John Loveridge rounded off the best move of the game on 47 minutes with a clever volley. Mark Rees then bagged two in five minutes, the first a tap in but for his second 'went Brazilian' with a terrific strike on 69 minutes.

STAR PLAYER - MARK REES

Ex-England Schoolboy winger Mark Rees helped Walsall to regain third division status at the first attempt in 1979-80. A former apprentice at Fellows Park, he made his League debut in The Saddlers' 2-1 win over Chester five months before turning professional in August 1979. Scoring in the epic victory at Arsenal en route to the League Cup semi-finals in 1983-84, he briefly appeared in Walsall's 1987-88 promotion campaign and netted 37 goals in 237 League games before moving to Shamrock Rovers in July 1990. Later with Aldershot, Dover, Shrewsbury Town, Solihull Borough and Oldbury United, he is a builder and floor layer in Cradley Heath.



26.8.2000. SWINDON 1 WALSALL 4 DIVISION ONE

We claimed our third successive win at the start of this season with relative ease, ripping through Swindon's defence with some incisive, purposeful football. Darren Wrack started the scoring on five minutes following a great defence-splitting pass from Gabor Bukran. Danny Invincible cashed in on some bad defending on 17 minutes to draw Swindon level, however, Dean Keates restored our lead on 38 minutes with a header. Darren Byfield scored with a clinical finish just past the hour-mark, leaving Jorge Leitao to wrap things up eight minutes from time thanks to a smart pass from winger Paul Hall.

STAR PLAYER - DEAN KEATES

Battling midfielder Dean Keates starred in Walsall's 1998-99 and 2000-01 promotion campaigns. Born locally, he turned professional with Walsall in August 1996 and made his League debut as a substitute in the 1-0 defeat at home to Plymouth Argyle two months later. He moved to Hull City in August 2002, then had spells playing for Kidderminster Harriers and Lincoln City prior to rejoining Walsall in January 2006. Scoring 24 goals in 212 League games overall for The Saddlers, he joined Peterborough United in July 2007 and helped win promotion in two consecutive seasons. He moved to Wycombe Wanderers in January 2010, then Wrexham and Rhyl.

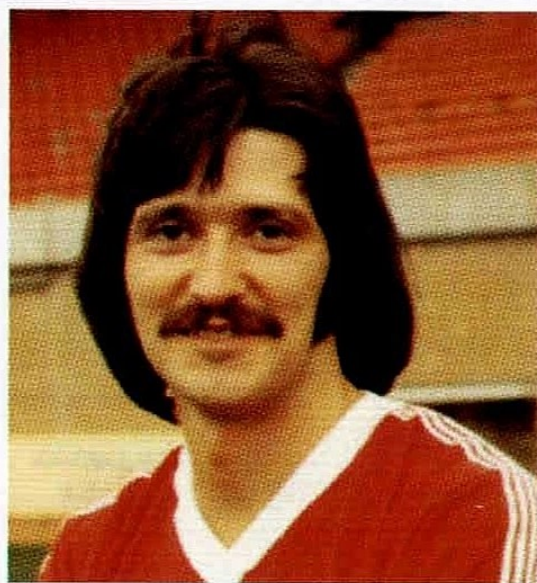


24.4.1976. SWINDON 5 WALSALL 1. DIVISION THREE

Our final game of the season saw four penalty conversions thanks to the decisions of referee, Lester Shapter. Things looked good when after 26 minutes Alan Buckley was brought down in the box by John Trollope. The Buck got up to score his 35th goal of the season. However twice within a few minutes penalties were awarded to Swindon, netted by Trevor Anderson. Soon after the interval Kelvin Clarke handled in the box and Anderson completed his hat-trick of penalties. Then to complete our misery David Moss and Dave Syrett netted within a few minutes towards the end.

STAR PLAYER - TREVOR ANDERSON

Northern Ireland international winger Trevor Anderson was Swindon Town's ever-present top scorer in 1975-76. Initially with Portadown, he joined Manchester United in October 1972 and scored twice on his debut on his international debut against Cyprus in May 1973. He moved to Swindon in November 1974, helping to secure FA Cup fourth round replays against eventual winners West Ham in 1974-75 and Everton in 1976-77. Scoring 34 goals in 131 League games, he joined Peterborough United in December 1977, then played for Linfield. He has since managed Linfield, Newry Town, Ards and Dundalk, working as a clerk at Belfast City Hospital.



16.1.1979. SWINDON 4 WALSALL 1. DIVISION THREE

In a reverse scoreline from the early season game at Fellows Park, we never looked likely to win from the outset. After several fine saves from Ian Turner, Swindon took the lead through Chris Kamara from an Ian Miller corner on 24 minutes. Dave Serella was unlucky to turn the ball past his own 'keeper for the second on 50 minutes. Just three minutes later we were back into it thanks to a fine Terry Austin header. The home side rallied and late goals from Chic Bates and Paul Gilchrist sealed a comprehensive Robins win.

STAR PLAYER - CHRIS KAMARA

Influential midfielder Chris Kamara had two spells at Swindon Town. Initially with Portsmouth, he joined Swindon Town in August 1977 and returned to Pompey in August 1981. He joined Brentford two months later and was their 'Player of the Year' in 1983-84. Appearing for the Bees in the 1985 Freight Rover Trophy Final, he rejoined Swindon in August 1985 and helped them win promotion in two consecutive seasons. He netted 27 goals in 234 League games overall before joining Stoke City in July 1988. Later at Leeds United, Luton Town, Sheffield United and Bradford City, he managed the Bantams and Stoke. Now a summariser on Sky Sports.





JDSports.CO.UK
PROUD PARTNER OF
WALSALL FC



NIKE





CONFERENCE & EVENTS

with Vicki Chambers

SING BABY SING CABARET SHOW

OUR FIRST Cabaret Show of 2016 will be one to remember as Sing Baby Sing perform their incredible tribute to The Stylistics on Saturday, 23rd April.

Comprising some of London's most experienced and talented musicians, Sing Baby Sing guarantee a first-class service of musical entertainment. Here they deliver a stunning performance to The Stylistics, a harmony vocal group who were one of the best-known Philadelphia soul acts of the 1970s.

Tickets, for both the show and a delicious award-winning three-course meal, cost just £32.50. Tickets for the show only are £20.



TICKET GIVEAWAY

WE ARE offering you the chance to win TWO free tickets to this Saturday's Sing Baby Sing Cabaret Show!

All you have to do is answer this question:
What was the Stylistics' first number one hit?

Please email your answer to vcchambers@walsallfc.co.uk by 4pm on Thursday, 21st April to be in with a chance of winning.

The prize includes a free three-course meal.

PAUL McGRATH SPORTING DINNER

WIDELY-regarded as Aston Villa's greatest-ever player, former defender, Paul McGrath, returns to the Banks's Stadium on Thursday, 12th May for the first of this year's fun-filled sporting dinners.

The Irish centre-back achieved legendary status at Villa Park and was nicknamed 'God' by the club's supporters.

The former Republic of Ireland International also played for Manchester United, Derby County, Sheffield United and St. Patrick's Athletic in a glittering 17-year career.

As always, our popular sporting dinners include a comedian, a silent auction, raffle and a delicious three-course meal. Tickets are £37.50.



DIFFUSION

DIFFUSIONONLINE.CO.UK

INSTORE CODE 'WFC15'

TO REDEEM THIS GREAT
OFFER PLEASE BRING
THIS LEAFLET TO:

WALSALL STORE ADDRESS:
PARK STREET, WALSALL,
WS1 1LY

VOUCHER REDEEMABLE INSTORE UNTIL 8.05.16 FOR 15%
OFF FULL PRICE ITEMS ONLY. ONLY ONE VOUCHER PER
TRANSACTION. VOUCHER NEEDS TO BE SURRENDERED AT
POINT OF SALE

RALPH LAUREN

BOSS
HUGO BOSS

LYLE & SCOTT

AJ ARMANI JEANS

Barbour

adidas
DIESEL

Levi's

LIAM KEELING MEMORIAL DINNER

ON FRIDAY we were delighted to present a cheque for £400 to the Liam Keeling Memorial Fund at our Annual Memorial Dinner in the Stadium Suite.

Around 250 people attended the evening in memory of Liam, a keen Walsall fan, who passed away in 2009 after developing meningitis.

The money was raised by the Banks's Stadium catering staff over the Christmas period and we were delighted to surprise all of Liam's family and friends with the donation.

CALL THE CONFERENCE & EVENTS TEAM ON 01922-651 418
OR EMAIL events@walsallfc.co.uk



**PROUD TO CONTINUE OUR
TITLE SPONSORSHIP**



UNTIL 2019

COMING NEXT SEASON

skybet.com



SUPPORTERS TRUST

www.walsallfctrust.org.uk

PROVISIONAL DATE SET FOR TRUST ANNUAL GENERAL MEETING

A provisional date of Thursday, June 9th has been set for the Trust AGM at the Pretty Bricks pub in John Street, Walsall WS2 8AF.

It will start at 7.30pm and is open to all full paid-up members. A full agenda will be circulated in due course via our social media outlets and via walsallfctrust.org.uk

Anyone interested in joining the Board should apply in writing or by email to the Secretary at walsall1888@aol.com or by post to: Steve Davies, 159 Woodland Road, Stanton, Burton on Trent, Staffs DE15 9TJ.

We are a small but committed band of fans and have spaces available on the Board for suitable people, so please get in touch if you are interested.

PRESENTATION TO TOM

FOLLOWING our congratulations to Tom Bradshaw in the last edition of the Matchday Programme on his first senior appearance for Wales, we decided to make a small presentation to the Bradshaw family to mark his milestone at Saturday's game.

They were presented with a framed Matchday Programme from the game in Kiev. It was lovely to be able to do this and celebrate a fantastic achievement for one of the Walsall FC Family. We'll publish the photo in the next issue.



CHECK OUT OUR WEBSITE

THE Trust website, www.walsallfctrust.org.uk is constantly being improved and updated by our Web and Social Media Man, Daz Anslow.

He is currently adding photos of former player visits from the past few years that have been kindly donated to us by Club Photographer, David Linney.

These, alongside the interviews carried out by our historian, Dave Evans, provide an invaluable link to our former players.

The website also features latest news and events that the Trust are involved with, plus details of how you can join. Log-on today to find out more.

Meanwhile The Trust Facebook page continues to go from strength-to-strength with over 1,200 people now added onto the page. Each one is vetted and if they are fans of other clubs, there is a good chance their request to join the page will be declined. The page is for Walsall fans ONLY.

The Walsall FC 125 years of history Facebook page is doing even better with 1,400 members of a closed group. There are some excellent historical items on this page and it is great to see comments from some former players like Stan Bennett, Kenny Mower, Mark Rees and Dave Serella to name but a few. Again this is a private group and we do our level best to keep it for Saddlers' fans only. It's well worth a look for fans who love our club's history.

MEMBERSHIP RENEWED

JUST a note to let you know that we have once again renewed our associate membership of The Football Supporters Federation for the next 12 months.

Steve Davies will be travelling down to London during the summer for the Supporters Direct and FSF Supporters' Summit.

THANKS FROM RAY

AS YOU know, Ray Graydon, had to cancel his appearance here at Banks's Stadium on Friday evening on medical grounds. Steve Davies will be travelling down to London during the summer for the Supporters Direct and FSF Supporters' Summit.

We have passed on all of the best wishes that we have received via Social Media, including messages from Pedro Matias and Jorge Leitao.

Ray was bitterly disappointed to have to let us down, but we will reschedule the event. He sends his sincere thanks for all the nice messages that he has received.

The raffle on behalf of CRY, which was due to take place at the event, will take place when it is rearranged. This is a cause very close to the heart of everyone at the club as we remember Matt Gadsby.

FORMER PLAYERS ASSOCIATION

FORMER PLAYERS DAY A SUCCESS

IT WAS great to see so many former players with us on Saturday for our annual Former Players Day.

There were players from all eras with us and we would like to thank Walsall FC for their support. John Leedham travelled from south London, whilst Stuart Rimmer came down from Merseyside. It was also great to see our elder statesmen, Phil Aston and Jack Bridgett, here.

Word is obviously getting around as we had a request to join the FPA from Richard Brown, who played for the club in the early 1990s. He is currently manager of Ellesmere Rangers, so it will be difficult for him to attend a game, but we are hoping to get him to don his boots for the Legends team.

If there are any other former players out there who want to join us, please let us know.

BYFIELD BOWS OUT ON A HIGH

DARREN Byfield has announced his retirement from playing after helping Solihull Moors achieve promotion into The National League last week.

Darren is also part of the Moors' coaching staff and will be concentrating on this role going forward.



LEGENDS FIXTURE CHANGE

OUR GAME against Wednesbury Athletic for the Margot Martini Cup will now take place at The Scholars Ground, home of Chasetown FC, on Saturday, May 7th with a 3.00pm kick-off.

This is to ensure the game goes ahead. We are unsure of the availability of Banks's Stadium due to a possible play-off fixture, so we are grateful to Chasetown FC for allowing us to use their facilities.

It will be an enjoyable afternoon for a great cause, so come along if you can as The Saddlers don't play until the Sunday on that weekend.

Meanwhile the Legends will take on HomeServe here at Banks's Stadium on Monday, May 16th (kick-off 7.30pm), then on Sunday, July 10th we face a Boxers XI at Red Star FC, Middlemoor Lane, Aldridge in aid of the British Heart Foundation and Birmingham Children's Hospital. This game will be part of a Fun Day organised by Shergin Gethin - there will be fun for all the family, so come along!

If you have a team and venue and want to play the Legends for charity, let us know. We made a good amount last summer for good causes in the area and are happy to do so again preferably against veterans' teams as we are not getting any younger these days!



THE SADDLERS CLUB

www.thesaddlersclubwalsall.com

WELCOME TO THE GAME

Tonight we welcome the travelling supporters from Swindon Town and wish them a safe journey home after the match.

NEW MEMBERS WELCOME

Fancy a pint before and/or after the match, and maybe a bite to eat beforehand?

Why not join The Saddlers Club (Walsall Football Supporters Club)? We sell a range of beers, ciders, spirits and soft drinks, including Carling Lager & John Smiths Bitter to name but two, all at reasonable prices.

There is also top entertainment most weekends (as shown), all at an affordable cost.

New Members pay just £17.00 to join, then £12.00 annually thereafter. It's even cheaper for Senior Citizens!

For more information please contact us...

SADDLERS CLUB SATURDAYS

30th APRIL
KARAOKE NIGHT (In the Lounge)
7th MAY
RANG A TANG
14th MAY
BOB BROLLY
21st MAY
THE GOOD FOOT
28th MAY
KARAOKE NIGHT (In the Lounge)
4th JUNE
SOULS 'n' STONE
& OUR TRACE (Charity Show)
All proceeds to
Golden Wishes Charity

SUNDAY NIGHT ENTERTAINMENT

24th APRIL LISA LEIGH
1st MAY R & R REBELLION
8th MAY RIVER REA DUO

MEMBERS - FREE - GUESTS - £1.00

FOR FURTHER INFORMATION VISIT OUR WEBSITE (SEE BELOW) OR SEE POSTERS & NOTICE BOARDS IN CLUB.

CONTACT US — TELEPHONE: 01922 649840

E-MAIL: thesaddlersclub@aol.com

WEBSITE: www.thesaddlersclubwalsall.com

COACHES TO AWAY MATCHES

SAT. 23rd APRIL v BRADFORD CITY Fare - £17.25 - Depart Banks's Stadium 10.15

SUN. 8th MAY v PORT VALE Fare - £11.25 - Depart Banks's Stadium 9.30

(Alternative pick-up points available)

Bookings can be made on matchdays at the travel office, situated at the rear corner of The Saddlers Club, between 1pm - 2.45pm and also after the game. Alternatively you can book in The Saddlers Club on Tuesday and Thursday evenings, (except match nights), between 7pm - 9pm.

No telephone bookings accepted.

VILLAGE
THE HOTEL CLUB

TAKE TO THE FLOOR WITH LOUIS SMITH
AT VILLAGE HEALTH & FITNESS WALSALL

+ you'll be entered into our prize draw to

WIN
A TRIP TO
SWITZERLAND*

JOIN NOW

& receive a £250 voucher book!

Call 01922 728 808

Village Walsall Tempus Drive, Tempus Ten, WS2 8TJ

www.VILLAGEFIT.co.uk

T&C's apply see website for details: www.Village-Hotels.co.uk/tcs

SOUND

SOUND HIRE & ENTERTAINMENT AGENCY

Sound & Lighting Hire - Stages

- Entertainment - Video Production and more...

- Sound Hire
- Lighting Hire
- Stage Hire
- Technicians available
- Plasma screen and Projection Hire
- Entertainment - Including Discos, Tribute bands, Casino tables
- Video Production services - Testimonial, web or DVD based films
- For any size event anywhere in the UK
- Ideal for Seminars, Conferences, Theatre shows, product launches, tours for bands, indoor and outdoor concerts, private parties & weddings



www.inpsound.com
0121 553 2531



LOSING CONTROL

Managing your credit can be stressful or stress-free.

The difference is our personalised text and email alerts to help you make payments on time.

The difference is how great it feels to be in control.

The difference is Capital One

capitalone.co.uk

34.9% APR representative variable

*A registered mark of Capital One (Europe) plc. Registered Office: Trent House, Station Street, Nottingham, NG2 3HX.
Registered in England and Wales. Company Number: 3879023. Authorised and Regulated by the Financial Conduct Authority.

VITAL STATISTICS



SKY BET LEAGUE ONE

As at 18/04/2016

Pos	Name	P	W	D	L	GF	GA	W	D	L	GF	GA	GD	Pts
1	Wigan	42	13	6	2	34	12	9	8	4	38	27	+33	80
2	Burton Albion	42	12	7	2	29	14	11	1	9	22	21	+16	77
3	Walsall	41	9	5	6	25	23	12	6	3	35	19	+18	74
4	Bradford	42	12	5	4	26	16	8	6	7	22	23	+9	71
5	Millwall	42	11	3	7	30	22	9	6	6	34	25	+17	69
6	Gillingham	42	13	4	4	38	19	6	7	8	28	29	+18	68
7	Barnsley	42	10	3	8	32	22	10	3	8	31	29	+12	66
8	Rochdale	42	12	4	5	38	22	6	6	9	24	31	+9	64
9	Sheff Utd	42	11	3	7	37	27	6	8	7	24	26	+8	62
10	Scunthorpe	42	10	6	5	25	14	7	5	9	28	32	+7	62
11	Port Vale	43	11	7	3	31	19	6	4	12	21	32	+1	62
12	Coventry	42	10	6	5	37	23	6	6	9	24	23	+15	60
13	Southend United	42	10	5	6	30	24	6	6	9	25	31	0	59
14	Peterborough	42	8	4	9	37	34	9	2	10	36	32	+7	57
15	Bury	42	9	8	4	32	24	6	4	11	19	39	-12	57
16	Swindon	42	8	4	9	35	36	6	5	10	22	32	-11	51
17	Chesterfield FC	42	5	5	11	32	38	9	2	10	22	28	-12	49
18	Oldham	42	6	5	10	24	33	4	13	4	18	20	-11	48
19	Fleetwood Town	42	8	7	6	31	20	3	7	11	18	32	-3	47
20	Shrewsbury	41	5	5	11	25	33	7	6	7	25	33	-16	47
21	Blackpool	43	8	5	9	22	20	4	4	13	17	34	-15	45
22	Doncaster	42	6	6	9	25	24	4	5	12	19	36	-16	41
23	Colchester	42	4	9	8	31	38	5	2	14	22	53	-38	38
24	Crewe	42	3	6	12	21	38	3	6	12	21	40	-36	30

UP NEXT...



SHREWSBURY TOWN

Sky Bet League One
Tuesday, April 26th 2016
Kick-off 7.45pm

WE FACE an old foe in our next game here in seven days time as we take on Shrewsbury Town.

The Shrews are looking to pull themselves clear of relegation danger having had an inconsistent campaign so far that has seen them take more points on their travels than at home.

The Saddlers chalked up a 3-1 win at the Greenhouse Meadow in December with Milan Lalkovic, Paul Downing and Jordan Cook on the scoresheet.

Encounters between the two clubs are more often than not keenly-contested affairs. Their last visit here ended in a 2-2 draw in November 2014 as Tom Bradshaw grabbed a last minute leveller against his former club.

Tickets for this game are now on sale at the usual advance Category A prices from the Banks's Stadium Ticket Office.

Burton Albion host high-flying Wigan Athletic tonight...



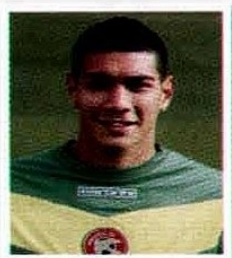
TODAY'S FIXTURES

Barnsley v Peterborough	19:45
Burton v Wigan	19:45
Chesterfield v Doncaster	19:45
Coventry v Bradford	19:45
Crewe v Colchester	19:45
Millwall v Fleetwood	19:45
Rochdale v Gillingham	19:45
Scunthorpe v Bury	19:45
Shrewsbury v Sheff Utd	19:45
Southend v Oldham	19:45



We thank all of our Kit Sponsors for their valued support... **KIT SPONSORS**

01 Neil Etheridge



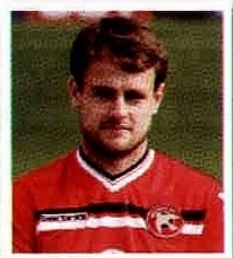
CHRIS MOORE AND
SCOTT THOMPSON

02 Jason Demetriou



THE WALSALL FC
COMMUNITY
PROGRAMME

03 Andy Taylor



WALSALL TRAINING
CENTRE
www.walsalltraining.com
01922-612 121

04 James O'Connor



THE VINE
Family-run pub
0121-553 2866

05 Matthew Pennington



SPV GROUP
www.spv-uk.co.uk
01922-749 511

11 Josh Wakefield



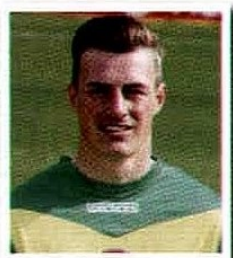
THE IVY HOUSE
www.ivyhousepub.co.uk
01922-476 607

12 Anthony Forde



LEATHER BY DESIGN
www.leatherbydesign.co.uk
01543 467 403

13 Craig Macgillivray



VERSATILE ME
www.Versatileme.co.uk
@versatileme_

14 Rico Henry



LNP SOUND
enquiry@lnpsound.com
0121-553 2531

15 Milan Lalkovic



ALAN MILES

21 Jordan Cook



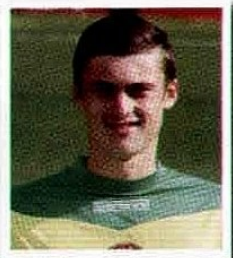
POM'S KITCHEN & DELI
www.pomskitchen.co.uk
01543-250 085

22 Liam Kinsella



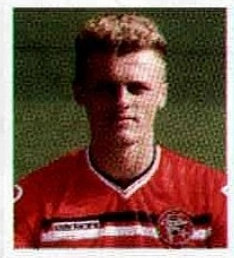
WALSALL CARPETS
www.walsallcarpets.co.uk
01922-634 555

23 Liam Roberts



ANYBLIND LTD.
www.anyblind.com
0333-121 2020

24 Levi Rowley



FIRST CHOICE
COMPUTERS
www.fcc-online.co.uk
01902-712 166

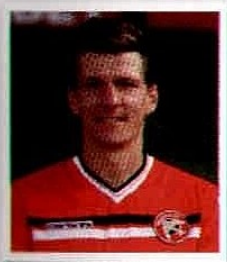
25



2015/16

To sponsor a player please call 01922 651 403

06 Paul Downing



QUALITY SOLICITORS
www.qualitysolicitors.com

07 Adam Chambers



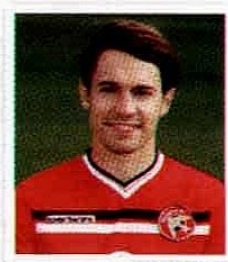
PERTEMPS
www.pertemps.co.uk

08 Sam Mantom



HAYCOCK & GRICE
01922-692 804

09 Tom Bradshaw



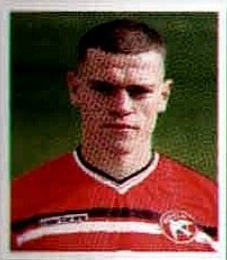
Streetly Gas & Plumbing
streetlygasandplumbing.co.uk
0121-353 4449
0800-043 1903

10 Romaine Sawyers



THE SADDLERS CLUB

16 Matt Preston



LILLIAN WELCH

17 Reece Flanagan



BARCLAYS BANK PLC

18 Kieron Morris



ALEXANDRA COPE

19 Jordan Murphy



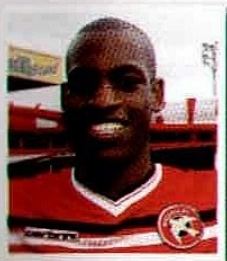
Walsall Football
Supporters Club Away
Travel Service

20 Amadou Bakayoko



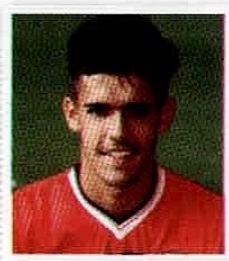
JOHN COOKE

26 Isaiah Osbourne



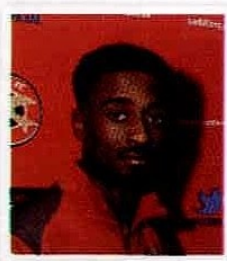
SAM COOKE

28 Jordon Sangha



IN TRANSIT
TRANSPORT SERVICES
LIMITED
024-763 05555

31 Jordy Hiwula

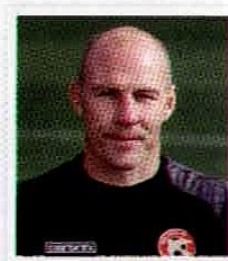


SKE BUILDING
PROJECTS LTD.
0161-776 1231



PJ ARNOLD -
DECORATORS & PAINTING
CONTRACTORS
0121-568 6260

Jon Whitney



ASSURED PLUMBING
GAS & ELECTRICAL LTD.
01922-454 687

COMMERCIAL



with Walsall FC Commercial Manager,
Wayne Thomas...



WELCOME TO OUR MATCHDAY SPONSORS

WE ARE delighted to welcome LNP Sound as Match Sponsor for the first time this evening.

LNP Sound specialise in providing you with state-of-the-art Audio Visual solutions for your event. Whether you need sound, lighting or staging they supply the complete package here in the Midlands and across the UK. This year they won the Business of the Year Award for Conference and Event services as well as being awarded as the tenth Best Business in the UK.

LNP Sound are proud to support Walsall FC by providing Audio Visual services for our End of Season Awards for the fourth year in a row.

Our Matchball Sponsor is The Saddlers Club. They have given plenty of support to us over many years and are the home of the Walsall Football Supporters Club.

May I extend an especially warm welcome to the guests of our Matchday Sponsors and express the hope that they all have an enjoyable evening with us.

LNP SOUND

1888 LOUNGE MEMBERSHIP

YOU WILL see on the centre spread of today's Matchday Programme that we still have the opportunity for all fans to either purchase or upgrade their current season ticket and experience for next season.

This offer expires on May 2nd after the Fleetwood Town fixture, so please take advantage while you can.

END OF SEASON AWARDS NIGHT

THIS is one of the most eagerly-anticipated evenings in the calendar. Details have recently been announced and tickets are already selling fast as the Walsall FC Family comes together to celebrate the season.

Get in touch to book your place and avoid disappointment. Sponsorship opportunities are also available for this great evening, so please contact me via the details at the foot of this page for further information.



MANAGERIAL DUO AND SKIPPER CONFIRMED FOR MARTINI CUP

I AM DELIGHTED to announce that the Walsall FC Legends team will be playing Wednesbury Athletic on May 7th at Chasetown FC (kick-off 3.00pm).

All monies raised on the day will go to the Team Margot Charity a really worthwhile cause, so please come along and show your support.

I am excited to announce that Chris Marsh and Stuart Ryder have been confirmed as the managerial duo for the game and who else but Martin O'Connor will skipper the side.

Other names confirmed to play are Craig Peard, Karl Hawley and Mark Wright. Stay tuned for other names, which will be confirmed over the coming weeks.



Enjoy the game and don't forget to get in touch for details of the various commercial opportunities that exist here at Walsall FC. I will be delighted to hear from you.

WAYNE THOMAS - Commercial Manager

TO FIND OUT MORE ABOUT THE VARIOUS COMMERCIAL OPPORTUNITIES THAT EXIST HERE AT WALSALL FC, PLEASE CONTACT ME, WAYNE THOMAS, ON 01922-651 400 OR EMAIL wayne.thomas@walsallfc.co.uk. I WILL BE DELIGHTED TO HEAR FROM YOU...

COMMERCIAL PRESENTATIONS



- 1 Saturday's game against Southend United saw Walsall Housing Group on Match Sponsorship duty and here we see some of their guests presenting Rico Henry with his Man of the Match prize.
- 2 We were delighted to have Henwood Court Financial Planning Ltd. with us as Matchball Sponsor and here we see them receiving a signed Walsall FC football from Rico Henry
- 3 Mascots Olly-James Fisher and Jim Cole are seen here

alongside the Match Officials and team captains just prior to kick-off.

- 4 It was Former Players Day and we were delighted to be joined by former players from down the decades.
- 5 We also looked to the future as the Academy Players of the Month were on the pitch at half-time to receive their certificates.
- 6 The Crossbar Challenge contestants get ready to do battle.



Sponsors Directory

We are fortunate to work with a number of companies who give outstanding **commercial support** to the club. Please support the businesses that support **The Saddlers...**

ACCOUNTANTS

DAINS ACCOUNTANCY &
BUSINESS SERVICES
www.dains.com
0121-384 9580

OAKWOODS ACCOUNTANTS
www.oakwoods-accountants.co.uk
01543-579 993

BETTING

SKY BET

BLINDS
ANYBLIND LTD.
0333-121 2020

BREWERIES
BANKS'S
www.bankssbeer.co.uk
01902-711 811

BUILDING
SKE BUILDING PROJECTS LTD.
0161 776 1231

CARPETS
WALSALL CARPETS
www.walsallcarpets.co.uk

CARS
ACORN MOTOR GROUP
www.acorn-group.co.uk

LONGWOOD GARAGE
01922-452 955

CATERING
POM'S KITCHEN & DELI
pomskitchen.uk
20-22 Bird Street, Lichfield -
01543-250 085

PUKKA PIES
www.pukkapies.co.uk
0116-264 4004

WINDSOR FOOD SERVICES
www.windsorfoodservice.co.uk -
01226-274 301

CEILINGS/FLOORING
DAVROY
0121-325 0899 -
www.davroy.co.uk

COACHES
BIRMINGHAM INTERNATIONAL
COACHES
www.birminghaminternationalco
aches.co.uk - 0121-783 4004

COMPUTERS
FIRST CHOICE COMPUTERS
www.fcc-online.co.uk - 01902-712
166

COMMUNITY ACTIVITIES
WALSALL FC COMMUNITY
PROGRAMME
www.saddlers.co.uk
01922-644 742

DENTAL
S4 DENTAL LABORATORY LTD.
01543-275 760

E-COMMERCE
FREECOM.NET
08444-720 022
enquiries@freecom.net

EDUCATION
WALSALL COLLEGE
www.walsallcollege.co.uk

ELECTRICAL
LOCKWELL ELECTRICAL
DISTRIBUTORS LTD.
www.lockwell.co.uk
01902-609 013

EMPLOYMENT LAW
GUARDIAN SUPPORT
0845-262 6260

ENGINEERING
MELISH ENGINEERING -
www.mellishengineering.co.uk

ENVELOPES
OPAL ENVELOPES
0190-279 1212
www.opalenvvelopes.co.uk

ESTATE AGENTS
MARRION & CO
ESTATE AGENTS
www.marrion.co.uk
01922-404 446

BARTLAM'S
ESTATE AGENTS
www.bartlams.co.uk

FINANCIAL SERVICES
THE WEST BROM
www.westbrom.co.uk
0845-456 7501

HAYCOCK & GRICE
FINANCIAL PLANNING
01922-692 804

BARCLAYS BANK
03457-345 345
www.barclays.co.uk

GARDEN SERVICES
LAZY LAWN -
www.lazylawn.co.uk

TIGER TURF
01299-253 966 -
www.tigerturf.com/uk/

HOME SERVICES

ASSURED PLUMBING, GAS &
ELECTRICAL LTD.
01922-454 687
www.assured-plumbing-gas-and-
electrical.co.uk

HOMESERVE
0800-694 4167
www.homeserve.com

TILE CHOICE
www.tilechoice.co.uk
01922-746 666

SURESTOP LTD.
www.surestop.co.uk
0845-643 1800

STREETLY GAS & PLUMBING
www.streetlygasandplumbing.co.uk
0121-353 4449 / 0800-043 1903

**INDEPENDENT FINANCIAL
ADVISERS**

BRANNAN PHILLIPS
FINANCIAL ADVISERS
www.brannanphillips.co.uk
01564-794 777

INDUSTRIAL ROOFING

SPV GROUP
www.spv-uk.co.uk
01922-749 511

INSURANCE

SADDLERS INSURANCE
0808-222 1888
www.saddlersinsurance.co.uk

MARKETS

BESCOT SUNDAY MARKET
07889-975 701

MEDIA

WALSALL ADVERTISER
CENTRAL INDEPENDENT
NEWSPAPERS LTD.
www.thisiswalsallonline.co.uk
01827-848 588

OFFICE ACCOMODATION

HILTON HALL
www.hiltonhall.co.uk
01902-863 030

PAINTERS & DECORATORS

PJ ARNOLD LTD.
Painting Contractors
0121-568 6260

PICTURE FRAMING

REGAL PICTURE FRAMERS
01922-694 052
www.regalpictureframers.co.uk

PRINTING

EXCEL PRINT LTD.
www.excelprintltd.co.uk
01922-715 080

PROPERTY

RCM DEVELOPMENTS

COLLIERS INTERNATIONAL

PUBLIC HOUSES

THE IVY HOUSE
01922-476 607 -
www.ivyhousepub.co.uk

THE VINE
Family-run pub
0121-553 2866

RECRUITMENT

PERTEMPS
www.pertemps.co.uk

RETAIL

JD SPORTS
www.jdsports.co.uk
01922-670 060

LEATHER BY DESIGN
01543-467 403
www.leatherbydesign.co.uk

MID COUNTIES CO-OP
01922-721 255
www.midcounties.coop

ROAD HAULAGE

HAYWARD TRANSPORT
www.jhayward.co.uk
01922-621 417

CEVA LOGISTICS -
www.cevalogistics.com

SCRAP METAL MERCHANTS

HODSONS (BLOXWICH) LTD.
01922-649 649

SHOPFITTING

MARTIN HART SHOPFITTING
www.martinhartshopfitting.co.uk
01922-456 111

SIGNS

NM SIGNS
0121-357 9357

SIGN SPECIALISTS LTD.
www.sign-specialists.co.uk
01527-504 250

SIGNZ 4 U / QUALITY SIGNS
0845-223 3080

SECURITY

SECURITAS
www.securitas.uk.com
0121-515 5253

SOCIAL CLUB

THE SADDLERS CLUB
01922-649 840

SOCIAL HOUSING

WALSALL HOUSING GROUP
www.whg.uk.com - 0300-555
6666

SOLICITORS

BURGOYNE & CO SOLICITORS
www.burgoynesolicitors.co.uk
01922-616 916

QUALITY SOLICITORS
01922-264 6400 -
www.qualitysolicitors.com/cmht

SOUND & LIGHTING HIRE

LNP SOUND - 0121 553 2531
www.lnpsound.com/home

TRAINING PROVIDERS

WALSALL TRAINING CENTRE
www.walsalltraining.com
01922-612 121

TV CHANNEL

BIG CENTRE TV
Local channel dedicated to the
Black Country and Birmingham
Freeview Channel 8 / Virgin
Media Channel 159

UNIVERSITY

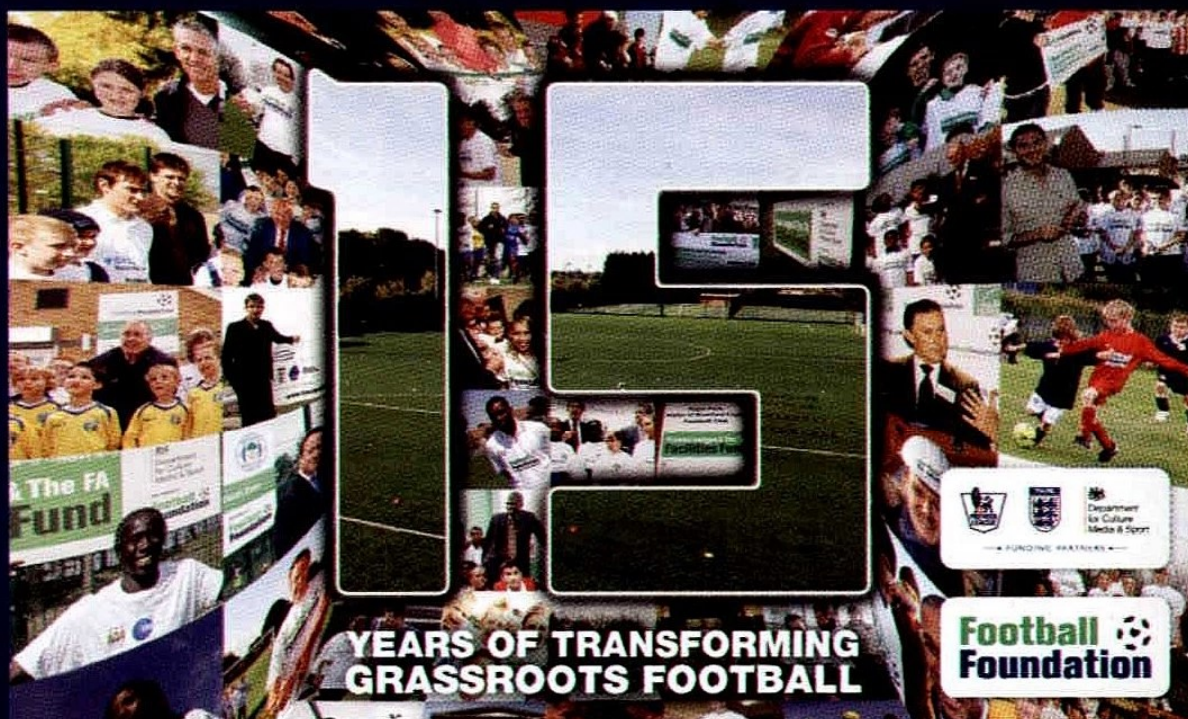
UNIVERSITY OF WOLVERHAMPTON
Course enquiries 01902-322 222
wlv.ac.uk

WELDING

J HARPER & SONS WELDING
FABRICATIONS LTD.
01922-478 419 / 01922-478 420


WINDOWS

LEAMORE WINDOWS
www.leamorewindows.com
01922-473 737




15 YEARS OF TRANSFORMING GRASSROOTS FOOTBALL

Football Foundation

 @FootballFoundtn

 flickr.com/footballfoundation

 Youtube.com/Footballfdn

 linkedIn.com/football-foundation

www.footballfoundation.org.uk

5 & 7 A-SIDE LEAGUES IN THE BLACK COUNTRY 01902 63 77 00 FREE TRIAL GAME



book online goalsfootball.co.uk

goals



Goals Black Country Darlaston Lane, Willenhall, West Midlands, WV14 7BL

A football player in a red shirt with 'Hartlepool' and 'sky BET' logos is celebrating a goal with his fist raised. A referee in a blue and white striped shirt is visible behind him. The background shows a blurred crowd of spectators.

**WE'RE
MAKING
FOOTBALL
LEAGUE
BETTING
BETTER**

sky BET

MORE MARKETS

**ON YOUR TEAM THAN ANY
OTHER BOOKMAKER**

ARE YOU IN?

skybet.com/FL72

18+ only. Terms and conditions apply. More Markets refers to Outright Markets, comparison made using Oddschecker. For more information visit skybet.com/FL72. GAMBLE RESPONSIBLY. FOR MORE INFORMATION VISIT WWW.GAMBLEAWARE.CO.UK

2015/16

STATS SO FAR

1 Neil Etheridge

2 Jason Demetriou

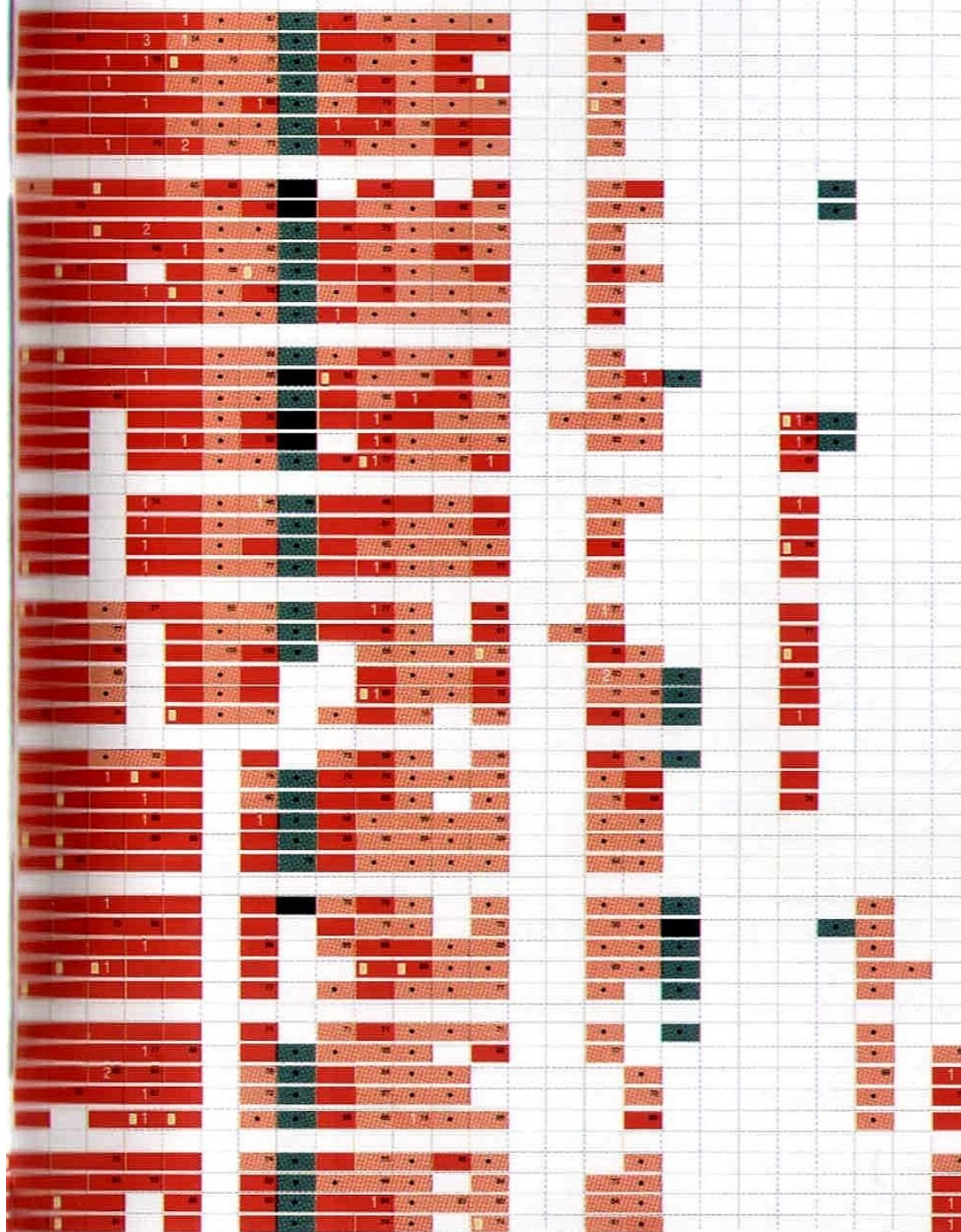
3 Andy Taylor

4 James O'Connor

DATE	OPPONENTS	VENUE	F-A	ATT	POS	REFEREE	COMP	KIT	
AUGUST									
Sat Aug 8	Oldham Athletic	H	1-1	5,009	-	M. Brown	FL1		
Tue Aug 11	Nottm Forest	A	4-3	5,237	-	D. Handley	CC1		
Sat Aug 15	Southend Utd	A	2-0	6,149	5	A. Davies	FL1		
Tue Aug 18	Rochdale	A	2-1	2,381	3	D. Webb	FL1		
Sat Aug 22	Coventry City	H	2-1	7,176	2	J. Simpson	FL1		
Tue Aug 25	Brighton	H	2-1	2,968	-	P. Bankes	CC2		
Sat Aug 29	Blackpool	A	4-0 (OG)	7,489	1	E. Iderton	FL1		
SEPTEMBER									
Tue Sep 1	Morecambe	A	0-2	1,332	-	S. Stocksbridge	JPT1		
Sat Sep 5	Bury	H	0-1	4,829	2	F. Graham	FL1		
Sat Sep 12	Doncaster R.	H	2-0	4,127	2	K. Wright	FL1		
Sat Sep 19	Peterborough	A	1-1	5,859	2	M. Heywood	FL1		
Wed Sep 23	Chelsea	H	1-4	10,525	-	L. Mason	CC3		
Sat Sep 26	Crewe Alex	H	1-1	4,229	2	J. Linington	FL1		
Tue Sep 29	Scunthorpe U	A	1-0	2,596	2	P. Tierney	FL1		
OCTOBER									
Sat Oct 3	Wigan Athletic	A	0-0	8,636	2	A. Haines	FL1		
Sat Oct 10	Burton Albion	H	2-0	6,812	1	T. Robinson	FL1		
Sat Oct 17	Chesterfield	H	1-2	4,766	2	C. Kavanagh	FL1		
Tue Oct 20	Barnsley	A	2-0	8,961	2	S. Duncan	FL1		
Sat Oct 24	Colchester U	A	4-4	3,630	2	S. Stockbridge	FL1		
Sat Oct 31	Gillingham	H	3-2	8,663	1	D. Drysdale	FL1		
NOVEMBER									
Sat Nov 7	Fleetwood Town	H	2-0	2,532	-	R. Joyce	FAC1		
Sat Nov 21	Sheff Utd	H	1-1	5,780	3	G. Eltringham	FL1		
Tue Nov 24	Swindon Town	A	1-2	6,385	4	K. Hill	FL1		
Sat Nov 28	Bradford City	H	2-1	4,668	4	M. Brown	FL1		
DECEMBER									
Tue Dec 1	Shrewsbury T	A	3-1	6,078	3	P. Bankes	FL1		
Sat Dec 5	Chesterfield	A	1-1	4,126	-	R. Clark	FAC2		
Tue Dec 15	Chesterfield	H	0-0 (AET - won 5-3 on pens)	2,953	-	C. Breakspear	FAC2R		
Sun Dec 20	Port Vale	H	2-0	4,436	2	K. Wright	FL1		
Sat Dec 26	Millwall	A	1-0	8,364	1	G. Ward	FL1		
Mon Dec 28	Peterborough	H	2-0	6,142	1	D. England	FL1		
JANUARY									
Sat Jan 2	Rochdale	H	0-3	4,857	3	G. Salisbury	FL1		
Sat Jan 9	Brentford	A	1-0	7,950	-	A. Davies	FAC3		
Tue Jan 12	Coventry City	A	1-1	15,671	3	T. Harrington	FL1		
Sat Jan 16	Bury	A	3-2 (OG)	3,532	2	M. Haywood	FL1		
Sat Jan 23	Blackpool	H	1-1	5,022	3	D. Whitestone	FL1		
Sat Jan 30	Reading	A	0-4	13,367	-	P. Bankes	FAC4		
FEBRUARY									
Tue Feb 2	Doncaster R.	A	2-1	5,056	2	B. Toner	FL1		
Sat Feb 6	Millwall	H	0-3	4,843	2	T. Kettle	FL1		
Sat Feb 13	Crewe Alex	A	1-1	5,123	3	D. Handley	FL1		
Sat Feb 20	Wigan Athletic	H	1-2	6,740	4	I. Williamson	FL1		
Sat Feb 27	Burton Albion	A	0-0	5,512	4	J. Adcock	FL1		
MARCH									
Tue Mar 1	Scunthorpe U	H	0-0	3,868	3	G. Eltringham	FL1		
Sat Mar 5	Barnsley	H	1-3	5,199	4	G. Ward	FL1		
Sat Mar 12	Chesterfield	A	4-1 (OG)	6,938	4	R. Joyce	FL1		
Tue Mar 15	Fleetwood T	A	1-0	2,589	3	C. Kavanagh	FL1		
Sat Mar 19	Colchester U	H	2-1	5,816	3	A. Haines	FL1		
APRIL									
Sat Apr 2	Sheff Utd	A	0-2	19,214	3	L. Swabey	FL1		
Sat Apr 9	Oldham Ath	A	0-1	4,396	6	B. Toner	FL1		
Tue Apr 12	Gillingham	A	2-1	6,246	3	S. Attwell	FL1		
Sat Apr 16	Southend United	H	1-0	5,732	3	K. Hill	FL1		
Tue Apr 19	Swindon Town	H					FL1		
Sat Apr 23	Bradford City	A					FL1		
Tue Apr 26	Shrewsbury T	H					FL1		
MAY									
Mon May 2	Fleetwood T	H					FL1		
Sun May 8	Port Vale	A					FL1		
Sat May 21	Emirates FA Cup Final								



6 Paul Downing
7 Adam Chambers
8 Sam Mantom
9 Tom Bradshaw
10 Romaine Sawyers
11 James Baxendale
12 Anthony Forde
13 Craig Macgillivray
14 Rico Henry
15 Milan Lalkovic
16 Matt Preston
17 Reece Flanagan
18 Kieron Morris
19 Jordan Murphy
20 Amadou Bakayoko
21 Jordan Cook
22 Liam Kinsella
23 Liam Roberts
24 Levi Rowley
25 Kyle Rowley
27 George Evans
30 Dan Jezeph
27 Bryn Morris
29 Maziar Kouhyar
31 Jordy Hiwula



KEY

- Denotes started game
- Denotes starting goalkeeper
- Denotes substitution time
- Denotes substitute
- Denotes goalkeeping substitute
- Denotes substitution time
- Denotes substitute not used
- 2 Denotes number of goals scored
- Yellow Card
- Red Card
- Own goal

Unless otherwise stated
all Saturday matches
kick off at 3pm
and midweek matches
at 7.45pm

MATCHDAY MUSIC



If you have any
comments,
suggestions
or queries regarding
the Matchday Music
here at Banks's
Stadium, please
contact
Mike Day at
music@walsallfc.co.uk.
Mike will pen an
occasional column
here
in the Matchday
Programme and on the
Official Website -
www.saddlers.co.uk,
so look out for that...

bescotsundaymarket

Open each and every **Sunday** between **9am** and **4.30pm**
with over **250 stalls** and plenty of **bargains...**

LEAGUE ONE TOP FIVES

GOALS

1	AJOSE	22
2	GRIGG	20
3	ARMSTRONG	19
4	WINNALL	19
5	PADDY MADDEN	18

ASSISTS

1	HOURIHANE	11
2	MADDISON	11
3	MCMAHON	11
4	DACK	9
5	SAWYERS	9

SHOTS ON TARGET

1	ARMSTRONG	55
2	PADDY MADDEN	51
3	SHARP	48
4	MADDISON	46
5	LEON CLARKE	45

MINUTES PER GOAL

1	AJOSE	130
2	GRIGG	133
3	KAIKAI	147
4	WINNALL	156
5	ARMSTRONG	157

% OF GOALS INVOLVED IN

1	PADDY MADDEN	40
2	WINNALL	40
3	AJOSE	39
4	SHARP	38
5	ARMSTRONG	37

MINUTES PER CHANCE CREATED

1	MADDISON	230
2	HARRIOTT	239
3	LOWE	254
4	MCMAHON	278
5	WILDSCHUT	280

FOULS

1	HANSON	87
2	MORISON	75
3	UCHE IKPEAZU	71
4	BISHOP	70
5	HAMMOND	69

MINUTES PER GOAL CONCEDED

1	JONES	34
2	HALSTEAD	41
3	GARRATT	49
4	PARISH	53
5	CORNELL	55

LEAGUE ONE SPOTLIGHT

Andy Williams has scored in each of his last four league appearances against Chesterfield, scoring four goals.

LEAGUE ONE SPOTLIGHT

Tom Bradshaw has scored three goals in his last four league games against Swindon.

* Data doesn't include games played on Apr 15-18

PARTING Shoot



JUNE 1990: As the countdown to the Official Opening got underway, it was a race against time to get everything ready, although the pitch was looking good...

Photos reproduced with the kind permission of Brian Tabner.

WALSALL



Interim Head Coach: Jon **WHITNEY**

1	Neil ETHERIDGE		
2	Jason DEMETRIOU		
3	Andy TAYLOR		
4	James O'CONNOR		
5	Matthew PENNINGTON		
6	Paul DOWNING		
7	Adam CHAMBERS		
8	Sam MANTOM		
9	Tom BRADSHAW		
10	Romaine SAWYERS		
11	Josh WAKEFIELD		
12	Anthony FORDE		
13	Craig MACGILLIVRAY		
14	Rico HENRY		
15	Milan LALKOVIC		
16	Matt PRESTON		
17	Reece FLANAGAN		
18	Kieron MORRIS		
19	Jordan MURPHY		
20	Amadou BAKAYOKO		
21	Jordan COOK		
22	Liam KINSELLA		
23	Liam ROBERTS		
24	Levi ROWLEY		
26	Isaiah OSBOURNE		
28	Jordon SANGHA		
29	Maziar KOUHYAR		
30	Dan JEZEPH		
31	Jordy HIWULA		

SWINDON TOWN



Head Coach: Luke **WILLIAMS**

1	* Lawrence VIGOUROUX		The Liverpool goalkeeper is currently on loan until the end of the 2015/16 season.
2	Nathan THOMPSON		A product of the STFC Academy. Thompson made his breakthrough into the first team during 2012/13.
3	Brandon ORMONDE-OTTEWILL		The left wing-back joined the Town from Arsenal having spent his scholarship with the Gunners.
4	Fabien ROBERT		The midfielder put pen to paper on a one-year deal with a year's option in the summer of 2015.
6	Jordan TURNBULL		Centre-back is on a season-long loan from Southampton after a successful stint at SN1 in 2014/15.
7	Drissa TRAORE		Traore started his career in his native France with Le Havre and has most recently piled his trade for Notts County.
8	Yaser KASIM		Kasim penned a permanent deal with the Town ahead of the 2013/14 campaign from Brighton.
10	Nicky AJOSE		The former Swindon loanee agreed a three-year deal at the County Ground in September 2015
12	Jake KEAN		Signed from Norwich City on an emergency seven-day loan and made his Debut against Bury on Saturday.
14	Michael DOUGHTY		Joined the Town on loan from QPR in January and will remain at the County Ground until the end of the campaign.
15	James BROPHY		The 21-year-old defender signed a one-year deal at SN1 following a successful trial period.
18	Louis THOMPSON		Although currently on loan from Norwich City, the youngster came up through the ranks at the STFC academy.
19	Jeremy BALMY		The midfielder joined Town on a one-year deal in September 2015 following two seasons with Notts County.
20	Jonathan OBIKA		Frontman who joined on deadline day 2014 from Premier League side Tottenham Hotspur.
21	Jamie SENDELS-WHITE		Defender. Sendles-White joined the Town on a deal until the end of the season in February 2016.
22	Lee MARSHALL		A graduate from the club's academy, Marshall has been with Swindon Town since the age of eight.
23	Josh COOKE		Cooke is also a first-year professional having put pen to paper on his first senior contract over the summer.
24	Jermaine HYLTON		The pacy striker penned a two-and-a-half-year contract with Swindon in the January 2015 transfer window.
25	Tyrell BELFORD		Belford signed a deal with Town in the summer of 2013 following his release from Liverpool's Academy.
26	Anton RODGERS		Son of former Liverpool manager who joined the Town in the summer of 2014 after leaving Oldham Athletic.
27	Bradley BARRY		The nephew of Everton and England midfielder, Gareth, put pen to paper on a one-year deal in August 2015.
28	Ellis IANDOLO		The young winger put pen to paper on a professional deal with Town in August 2015.
29	Raphael ROSSI-BRANCO		The Brazilian centre-half penned a deal with Town in the summer after a successful trial period.
37	Jamie CALVIN		Swindon Town brought in former Watford and Oxford United striker Jamie Calvin in November 2015.

THE LAST TIME WE MET

SWINDON TOWN 2 WALSALL 1

Tuesday, November 24th 2015. Sky Bet League One. County Ground
Attendance: 6,385. Referee: Keith Hill.



The Robins were given a 17th minute lead courtesy of Jonathan Obika, which was cancelled out just past the hour-mark by Tom Bradshaw. However, there was to be a sting in the tail when Louis Thompson grabbed a last minute winner for the home side.



MATCH OFFICIALS



Referee:
Nicholas **KINSELEY**



Assistant Referees:
Alan **CLAYTON**
Nick **GREENHALGH**



Fourth Official:
Wayne **BARRATT**

UPCOMING FIXTURES



AWAY FIXTURE
BRADFORD CITY

Saturday, April 23rd 2016
Sky Bet League One
Kick-off 3.00pm
Valley Parade



HOME FIXTURE
SHREWSBURY TOWN

Tuesday, April 26th 2016
Sky Bet League One
Kick-off 7.45pm
Banks's Stadium



HOME FIXTURE
FLEETWOOD TOWN

Monday, May 2nd 2016
Sky Bet League One
Kick-off 12.15pm
Banks's Stadium

FOR THE LATEST TICKET INFORMATION PLEASE VISIT
WWW.SADDLERS.CO.UK/TICKETS/TICKET-PRICES

ISSUE 25

